

Local Marine Notice 012-2026

Sydney Harbour, Circular Quay

Overseas Passenger Terminal – Berthing Infrastructure Project

Mariners are advised that berth deepening and scour protection installation works will be undertaken at the Overseas Passenger Terminal berth from approximately **mid-April 2026 through to September 2026**. Works will be undertaken around the cruise vessel schedule and activity at the southern end of the berth box will be limited to night works to minimise interaction with Circular Quay traffic.

Bulk Berth Deepening

Berth deepening works to remove high spots will be undertaken across the berth box and a small manoeuvring area at the southern end of the berth, as shown by the magenta-shaded areas in Figure 1 below. The majority of the works will be undertaken within the OPT berth box.

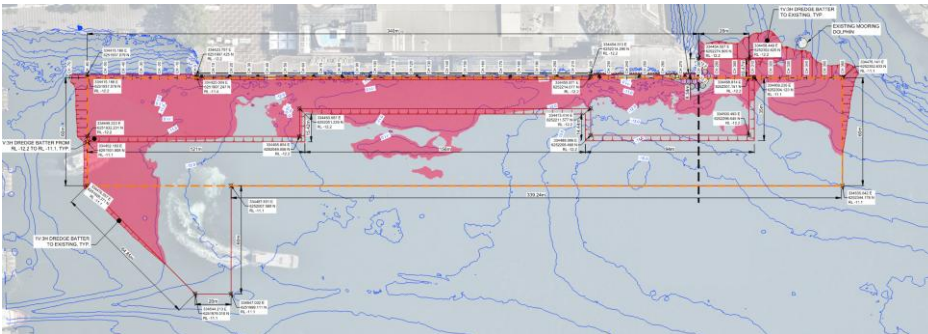


Figure 1: Magenta shaded area showing areas of berth deepening

Vessels involved in the bulk dredging works will include the backhoe dredge, *Machiavelli*, and two split hopper barges working over a 5-day period. Works will generally progress from the north to south. The southern end section will be completed over a single nightshift working outside of the period of normal operations for the wharves, with a small northern area being completed at the end using smaller vessels for a period of 2 to 3 weeks.

Dredged material will be placed into split hopper barges, and the bulk of the removed material will be transported to an offshore placement ground.

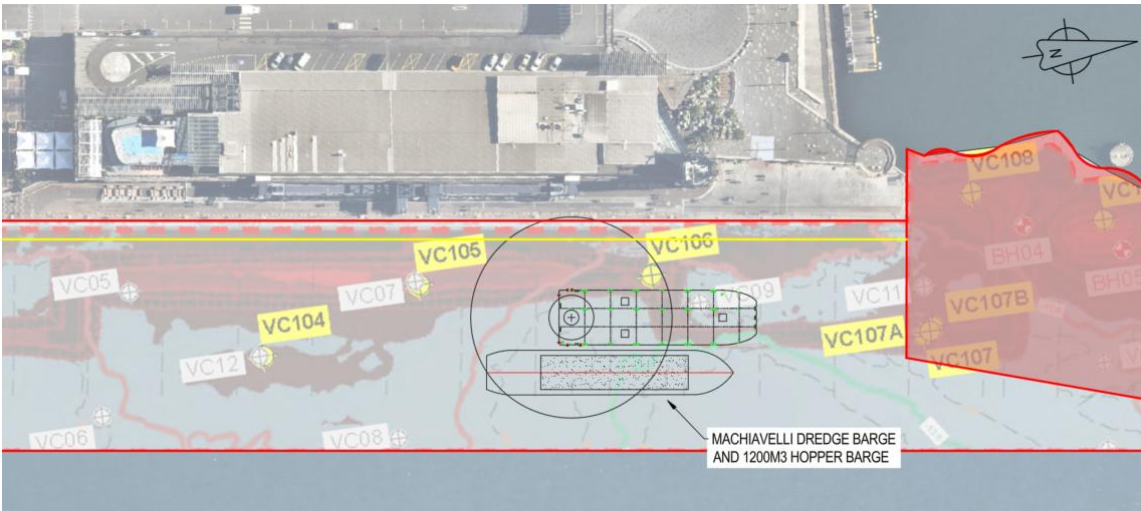


Figure 2: Dredging will generally progress north to south within the berth box

Scour Protection Installation

Scour protection, consisting of heavy-duty rock bags, will be installed within a 30-meter zone from the wharf face inside the OPT berth box, as shown in Figure 3. All works will be within the OPT berth box.

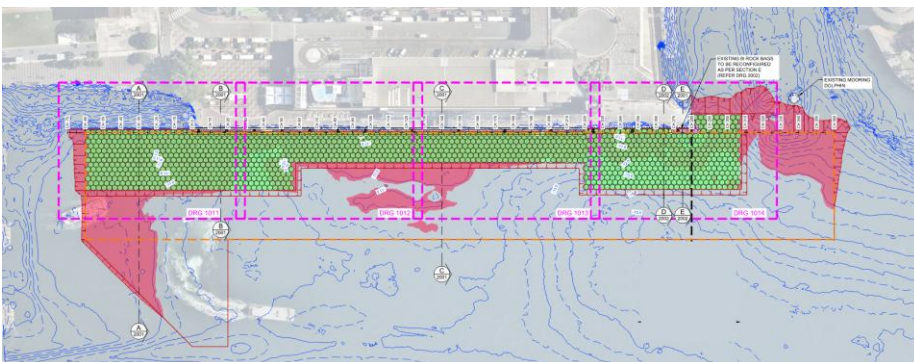


Figure 3: Scour protection installation shown in green

Scour protection will be placed with crane barge progressing from south to north. Divers will be in the water supporting the bag placement. Barges will be used to transport rock bags from White Bay to the OPT by water.



Figure 4: Crane barge placing scour protection from south to north

Working Hours and Marine Access

The bulk dredging works will be undertaken on a 24/7 basis over a 5-day period commencing **11 May 2026**. The works at the southern end (as shown as Site B in Figure 5 below) will be undertaken at night, approximately between 01:30am to 05:00am (within a single shift), to minimise any potential impact to Circular Quay users.

Scour protection installation works will be undertaken over an approximately 16-week period following completion of the bulk dredging, using a combination of day and night works to suit berth box availability.

Access to all Circular Quay wharves and Campbells Cove will be maintained throughout the works.



Figure 5: Areas of nominated night works

Monitoring Buoys

Three yellow continuous turbidity monitoring buoys will be temporarily installed as part of the dredging phase of the project at the locations marked red and blue, as shown in Figure 6 below.



Figure 6: Continuous turbidity monitoring buoy locations

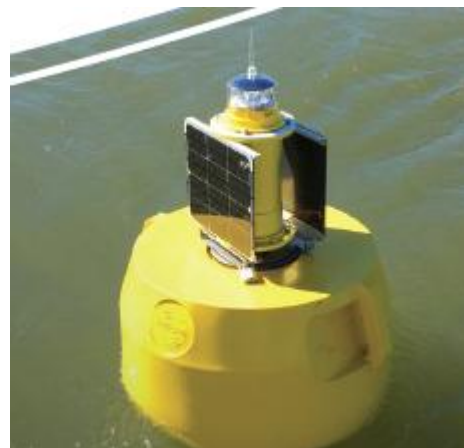


Figure 7: Photo of a monitoring buoy

Mariners navigating in the vicinity are requested to proceed with caution and remain alert to the presence of inspection vessels and diver activity. Temporary exclusion zones will be in place around marine equipment, and all vessels involved in the works will be adequately lit for night operations.

Vessels

Primary Dredging Equipment

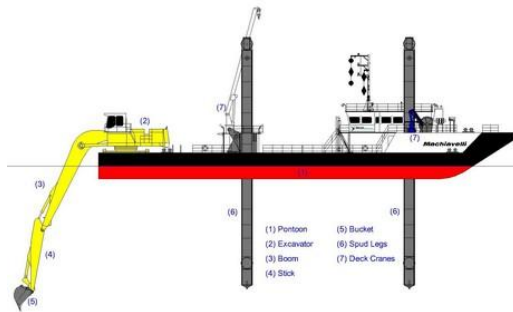


Figure 8: 53m Machiavelli backhoe dredge



Figure 9: 66m Split hopper barge

Scour Protection Installation Equipment



Figure 10: 53m PM East Crane Barge



Figure 11: Typical 30m transport barge

For a list of Local Marine Notices currently in force, please see:

[Local Marine Notices | Port Authority New South Wales \(portauthoritynsw.com.au\)](http://portauthoritynsw.com.au)