

Local Marine Notice 002-2026

Port Botany

Submarine Cable Laying and Diving Operation

Mariners are advised that **submarine cable installation works**, including associated **diving operations**, will be undertaken **off Maroubra Beach**. Exclusion zones will be in place during diving and cable laying operations to ensure the safety of vessels and personnel.

Two cable installation campaigns are scheduled from **13 January 2026 up to 6 April 2026**.

Vessels involved in the works will include the cable lay vessels *CS Ile d'Yeu* and *CS Peter Faber* for the OMS campaign and *MV Dependable* for the SUBCOM campaign, as well as the dive vessel *MV El Dorado*. A support vessel, *MV Bundy* (black RIB), will also be used. During cable installation activities, the operational vessel will be considered restricted in her ability to manoeuvre and will display the appropriate navigation lights and shapes.

During cable laying operations, the dive team will operate approximately 100 metres from the cable lay vessel. A **100-metre exclusion zone will apply around the cable lay vessel**, and a **60-metre exclusion zone will apply around *MV El Dorado* when diving is in progress**. The dive vessel will display International Code Flag "Alpha" while divers are in the water. In addition, a **safety zone of up to 1 nautical mile (water depth dependent) will be maintained around the operational vessel where practicable**.

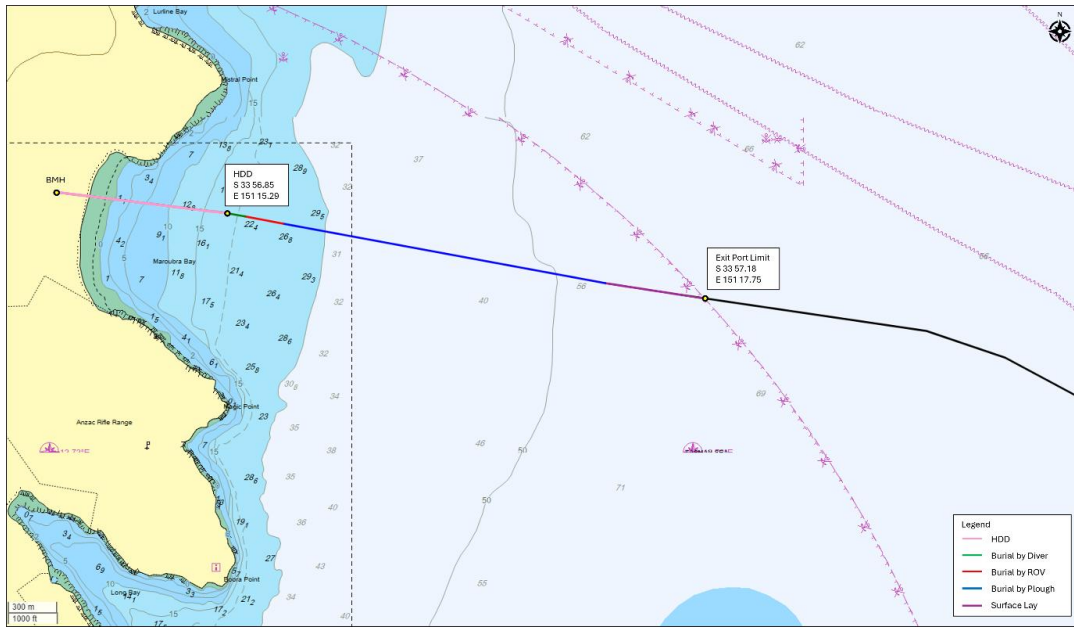
All vessels engaged in the operation will monitor VHF Channel 16. Mariners navigating in the vicinity are requested to maintain a proper lookout and proceed with caution.

The works may affect AUS Chart 202 during the OMS campaign and AUS Chart 198 during the SUBCOM campaign.

This notice will self-cancel upon completion of the works.

For a list of Local Marine Notices currently in force, please see:

[Local Marine Notices | Port Authority New South Wales \(portauthoritynsw.com.au\)](https://portauthoritynsw.com.au)



OMS Campaign. SUBCO Submarine Cable System (SSCN). Operation area within Botany Bay port limit.



SubCom Campaign. Tabua and Honomoana cables.



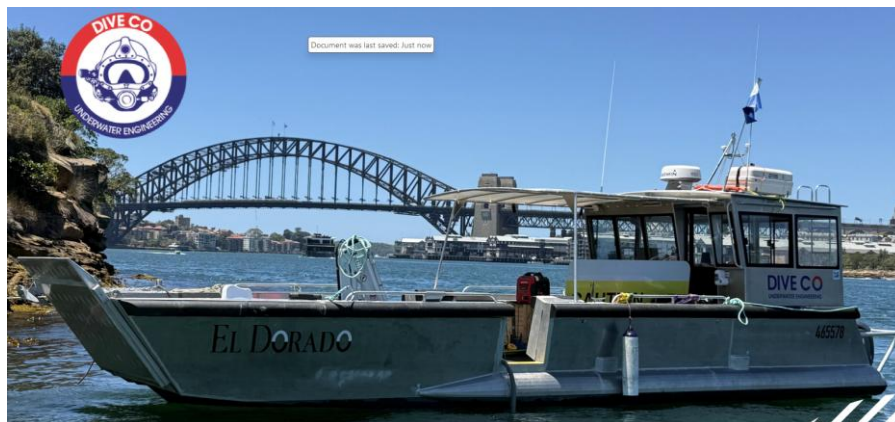
CS Ile d'Yeu



CS Peter Faber



CS Dependable



Dive vessel El Dorado