

Local Marine Notice 023-2025

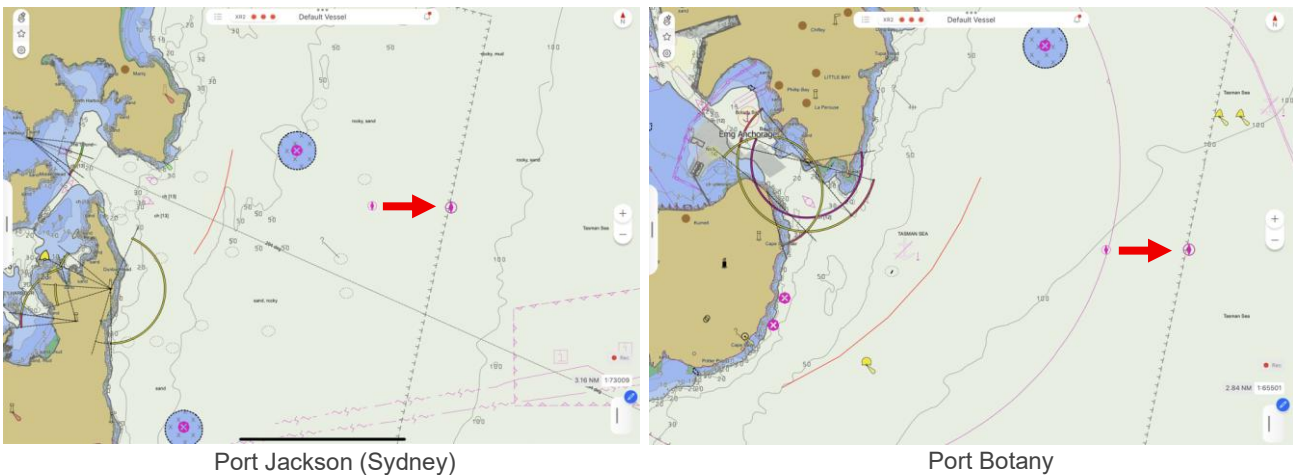
Sydney Harbour and Port Botany

Relocation of Pilot Boarding Ground for Port Jackson (Sydney Harbour) and Port Botany

Mariners are advised that the Pilot Boarding Ground (PBG) for Port Jackson (Sydney Harbour) and Port Botany has been moved approximately 1 nautical mile east of its original position to enhance navigational safety and operational efficiency. AHO charts have been updated with the new PBG coordinates as noted below:

- **Port Jackson (Sydney Harbour): 33° 50.061' S, 151° 22.988' E**
- **Port Botany: 34° 01.000' S, 151° 20.147' E**

From **0001H on Friday, 31 October 2025**, mariners are advised to use the new Pilot Boarding Ground.



This Local Marine Notice supersedes *Local Marine Notice 021-2025: Sydney Harbour & Port Botany - Relocation of Pilot Boarding Ground for Port Jackson (Sydney) and Port Botany*, which is hereby cancelled.

For a list of Local Marine Notices currently in force, please see:
[Sydney Harbour and Port Botany notices, forms and permits | Port Authority of NSW](#)