

# SITE CARD OVERSEAS PASSENGER TERMINAL NORTHERN WHARF



# OPT – NORTHERN WHARF

## LOCATION

- Located at the Overseas Passenger Terminal (OPT) with direct access via Circular Quay West and uninterrupted views of the Opera House.

## ACCESS

- Access is via the OPT Carpark entry on George Street. Vehicles can be directly driven onto the site if loading approved. Access is either via the Cargo Hall if available or via the turning circle (additional cost with this option).

## FACILITIES



Power



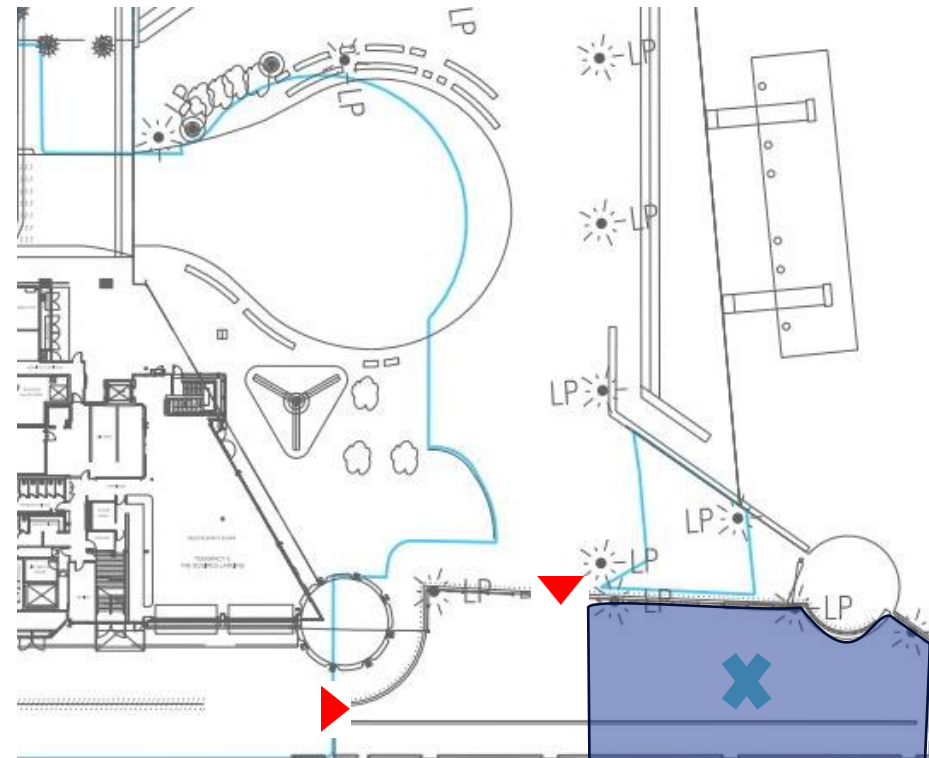
Publicly available restroom at terminal



Entry Points



Your Site Location



# OPT – NORTHERN WHARF

## SITE INFO

- Total Floor Space is 520 sqm

## POWER

- 204V 15A GPO and 415V 3 phase 50A switched outlet available on the wharf edge

## PARKING

- On non-ship days car parks are open to the public (prices available on the [Port Authority website](#)). Parking is available in both the upper and lower car parks. All day permits can be arranged through the Commercial Team prior to the event.

