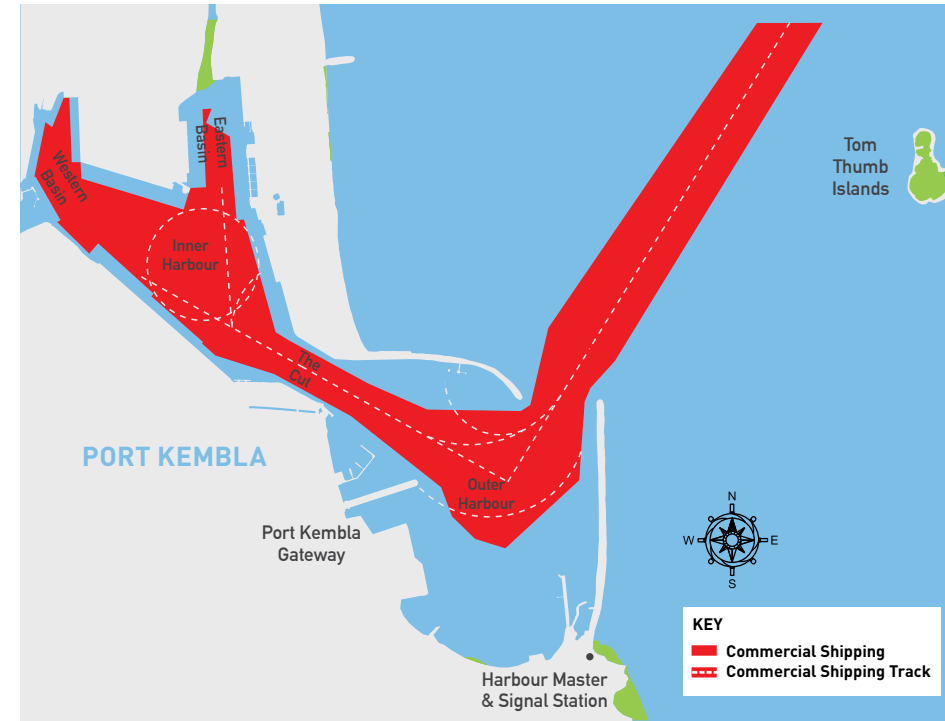


STEPS TO STAY SAFE NEAR SEAGOING SHIPS

- > Always **keep a lookout** for seagoing ships.
- > **Determine if the vessel is moving towards you** or away from you.
- > Always **keep a safe distance** away from a large vessel.
- > From the ship's bridge it is hard to see smaller boats. Some ships will have blind spots ahead of up to 600 metres. **Stay far enough away to be in sight.**
- > **Act early** so you can move away from these seagoing ships.
- > **Familiarise yourself** with the shipping channels or fairways.
- > **Stay clear** of the channels or fairways when seagoing ships are entering or departing the ports.
- > **Be aware** of wakes of seagoing ships, particularly when the large vessel is in relatively shallow water and moving at higher speeds.
- > Always have your **navigation lights on at night** so other vessels can clearly see you.



- > You **MUST** stay well clear of the shipping channels and large ships and only cross the channel when it is safe to do so.
- > **DO NOT** anchor in a channel or fairway.
- > **DO NOT** block a channel or fairway.
- > Before heading out check the **Daily Vessel Movements** at portauthority.com.au/lookoutkembla

SAFETY NOTICE TO ALL BOAT OPERATORS

Port Kembla VHF 11



LOOK OUT SHIPS ABOUT
DON'T RISK YOUR LIFE



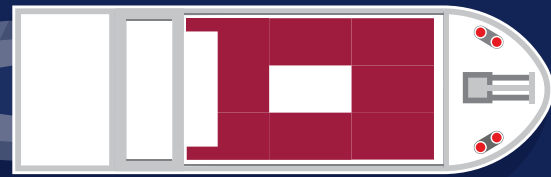
December 2020

ALWAYS LOOKOUT FOR SEAGOING SHIPS

DO NOT pass within 30 metres of the side or stern of a seagoing ship

< 30m

< 30m

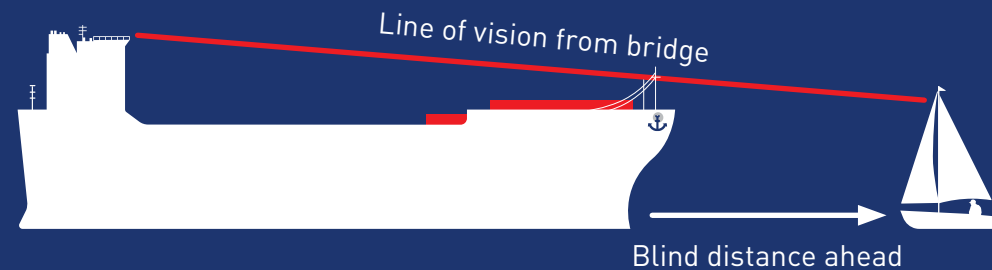


30m >

- > **Keep monitoring the safety broadcast** broadcast from Port Kembla VTS (24/7) on VHF Channel 11

STAY FAR AWAY TO BE IN SIGHT

- > From the ship's bridge it is hard to see smaller boats. Some ships will have blind spots ahead of up to 600 metres. Stay far enough away to be in sight.



BE AWARE IT'S THE LAW

Under NSW marine legislation you are required to never obstruct, restrict or impede access to:

- > any fairway or channel
- > any wharf or other landing place
- > the safe navigation of a vessel
- > the handling of cargo or movement of passengers
- > launching, removal, securing of a vessel.

It is an offence to:

- > fail to comply with the directions of the harbour master or any person acting under the direction of a harbour master
- > operate a vessel in any navigable waters negligently, recklessly or at a speed or in a manner dangerous to the public.

portauthority.com.au/lookoutkembla

Disclaimer: The information in this brochure is provided for general information only and it does not constitute legal or other professional advice.

