



# White Bay Cruise Terminal

Air Quality and Meteorological Monitoring  
Report – November 2020

13 January 2021

Project No.: 0429140

<b>Document details</b>	The details entered below are automatically shown on the cover and the main page footer. PLEASE NOTE: This table must NOT be removed from this document.
Document title	White Bay Cruise Terminal
Document subtitle	Air Quality and Meteorological Monitoring Report – November 2020
Project No.	0429140
Date	13 January 2021
Version	1.0
Author	Angel Sanz
Client Name	NSW Port Authority

#### Document history

Version	Revision	Author	Reviewed by	ERM approval to issue		Comments
				Name	Date	
Draft	01	Angel Sanz	James Grieve	Damon Roddis	18.12.2020	Draft Report
Final	01	Angel Sanz	Peter Taylor	Damon Roddis	13.01.2020	Final Report

---

**Signature Page**

13 January 2021

# White Bay Cruise Terminal

Air Quality and Meteorological Monitoring Report – November 2020

---



Peter Taylor  
Project Manager



Damon Roddis  
Partner

---

ERM Australia Pacific Pty Ltd  
Level 15, 309 Kent Street  
Sydney NSW 2000

© Copyright 2021 by ERM Worldwide Group Ltd and / or its affiliates ("ERM").  
All rights reserved. No part of this work may be reproduced or transmitted in any form,  
or by any means, without the prior written permission of ERM.

## DISCLAIMER

ERM acts in all professional matters as a faithful advisor to the Client and exercises all reasonable skill and care in the provision of its professional services. Reports are commissioned by and prepared for the exclusive use of the Client. They are subject to and issued in accordance with the agreement between the Client and ERM. ERM is not responsible for any liability and accepts no responsibility whatsoever arising from the misapplication or misinterpretation by third parties of the contents of its reports. Except where expressly stated, ERM does not attempt to verify the accuracy, validity or comprehensiveness of any information supplied to ERM for its reports.

Reports cannot be copied or reproduced in whole or part for any purpose without the prior written agreement of ERM. Where site inspections, testing or fieldwork have taken place, the report is based on the information made available by the client or their nominees during the visit, visual observations and any subsequent discussions with regulatory authorities. The validity and comprehensiveness of supplied information has not been independently verified and, for the purposes of this report, it is assumed that the information provided to ERM is both complete and accurate. It is further assumed that normal activities were being undertaken at the site on the day of the site visit(s), unless explicitly stated otherwise.

## CONTENTS

<b>1.</b>	<b>INTRODUCTION .....</b>	<b>2</b>
<b>2.</b>	<b>AIR QUALITY DATA .....</b>	<b>3</b>
2.1	Cruise Ship Days .....	3
2.2	10-minute Average Sulfur Dioxide Concentrations .....	3
2.3	1-hour Average Sulfur Dioxide Concentrations .....	4
2.4	24-hour Average Sulfur Dioxide Concentrations .....	4
2.5	24-hour Average PM <sub>2.5</sub> Concentrations .....	6
2.6	Summary Statistics .....	9
<b>3.</b>	<b>METEOROLOGICAL DATA .....</b>	<b>10</b>
<b>4.</b>	<b>DATA AVAILABILITY .....</b>	<b>11</b>
<b>5.</b>	<b>REFERENCES .....</b>	<b>12</b>

### List of Tables

Table 2-1: Summary statistics for SO <sub>2</sub> and PM <sub>2.5</sub> concentrations at WBCT (µg/m <sup>3</sup> ) .....	9
Table 4-1: Data availability and summary statistics for SO <sub>2</sub> and PM <sub>2.5</sub> .....	11

### List of Figures

Figure 2-1: 10-minute average SO <sub>2</sub> concentrations.....	3
Figure 2-2: 1-hour average SO <sub>2</sub> concentrations .....	4
Figure 2-3: 24-hour average SO <sub>2</sub> concentrations at WBCT and DPIE monitoring sites.....	5
Figure 2-4: 24-hour average PM <sub>2.5</sub> concentration at WBCT and DPIE monitoring sites.....	7
Figure 3-1: Wind rose for the reporting period .....	10
Figure 4-1: Output summary and data distribution.....	11

## 1. INTRODUCTION

The Port Authority of New South Wales (NSW) has committed to undertaking air quality monitoring in the residential area adjacent to the White Bay Cruise Terminal (WBCT). This report presents a summary of monitoring data collected during November 2020.

For additional detail regarding the history of the monitoring program, the methodology, monitoring station equipment and technology, please refer to any of the monthly reports prior to February 2018.

## 2. AIR QUALITY DATA

The monitoring results are presented below with comparison to the ambient air quality criteria for SO<sub>2</sub> and PM<sub>2.5</sub> provided in The Approved Methods for the Modelling and Assessment of Air Pollutants in New South Wales (EPA, 2017). The relevant averaging periods are 10 minutes, 1 hour and 24 hours for SO<sub>2</sub>, and 24 hours for PM<sub>2.5</sub>.

The 24-hour average SO<sub>2</sub> and PM<sub>2.5</sub> concentrations are also compared with the data from several NSW Department of Planning, Industry and Environment (DPIE) monitoring sites, formerly known as Office of Environment and Heritage (OEH).

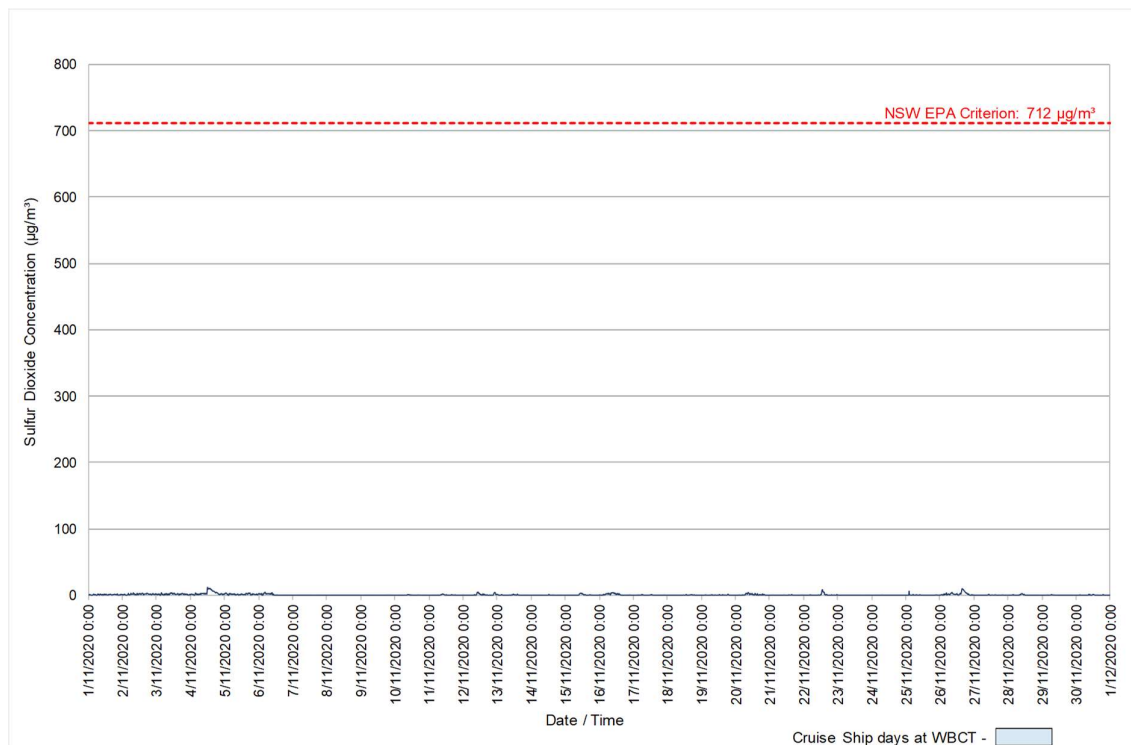
### 2.1 Cruise Ship Days

There were no cruise ships berthed during the month of November 2020 due to the COVID-19 restrictions.

### 2.2 10-minute Average Sulfur Dioxide Concentrations

A time-series plot of 10-minute average SO<sub>2</sub> concentrations for November is provided in Figure 2-1. No exceedances of the 10-minute average air quality criterion for SO<sub>2</sub> were recorded during the reporting period.

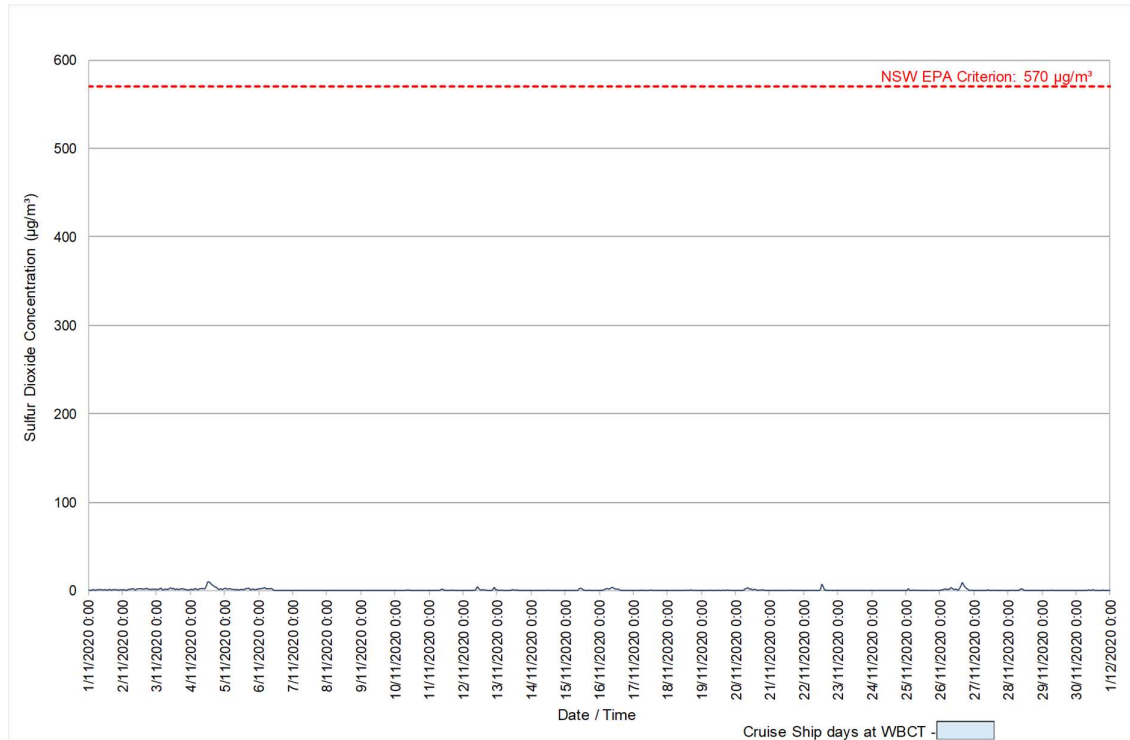
The highest 10-minute average SO<sub>2</sub> concentration (11 µg/m<sup>3</sup>) was recorded on 4 November at 11:50 am. This concentration is approximately 2% of the NSW Environmental Protection Authority (EPA) criterion.



**Figure 2-1: 10-minute average SO<sub>2</sub> concentrations**

### 2.3 1-hour Average Sulfur Dioxide Concentrations

A time series plot of the 1-hour average SO<sub>2</sub> concentration for November is shown in Figure 2-2. No exceedances of the 1-hour SO<sub>2</sub> criterion were recorded during the reporting period. The highest 1-hour average SO<sub>2</sub> concentration (9 µg/m<sup>3</sup>) was recorded on 4 November at 1 pm. This concentration is approximately 2% of the NSW EPA criterion.



Note: Blue shading indicates cruise ship days, not arrival and departure times. Arrival and departure times are provided in Table 2.1.

**Figure 2-2: 1-hour average SO<sub>2</sub> concentrations**

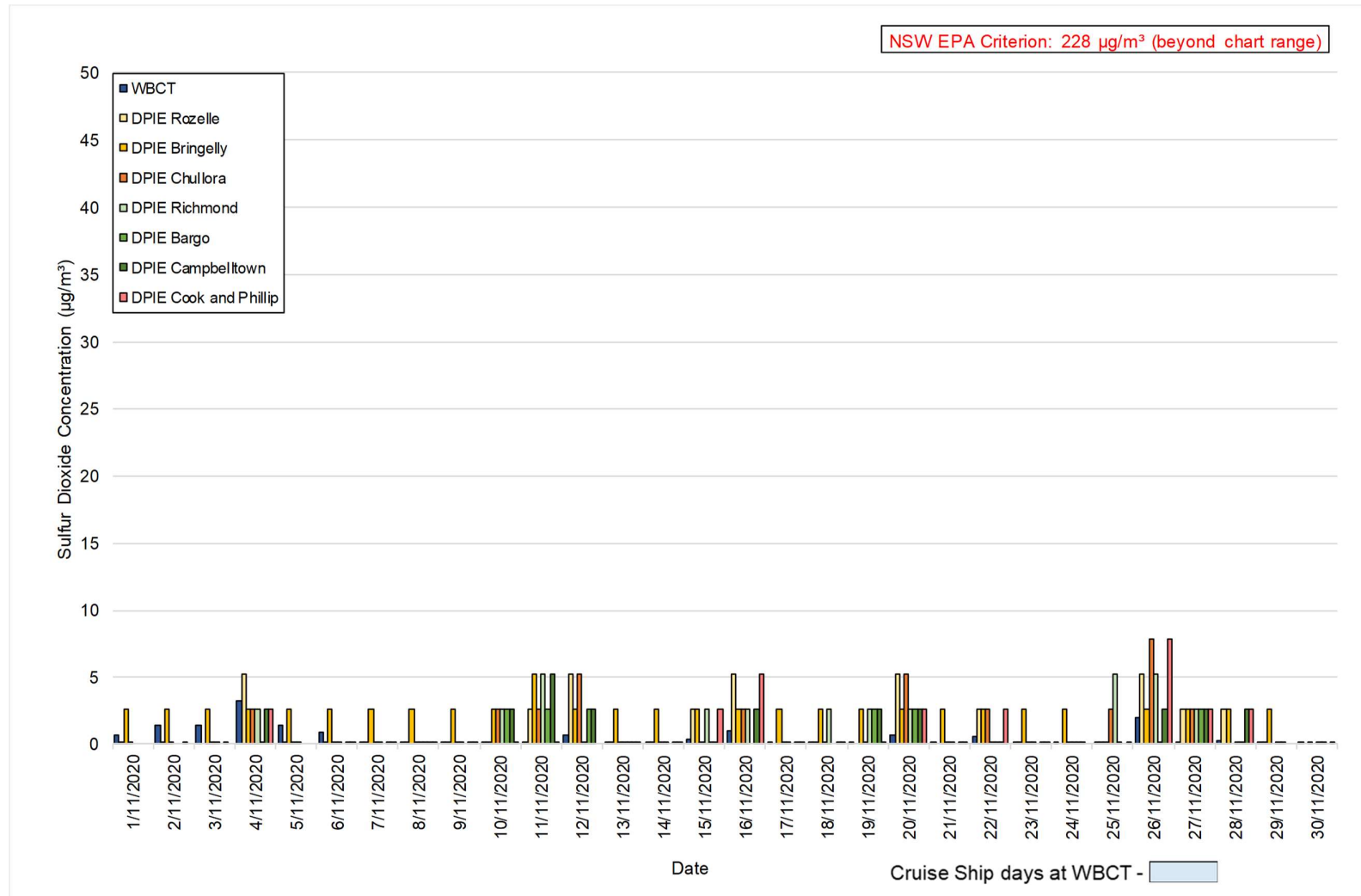
### 2.4 24-hour Average Sulfur Dioxide Concentrations

Time-series plots of 24-hour average SO<sub>2</sub> concentrations at WBCT and selected NSW DPIE urban background sites in Sydney are shown in Figure 2-3.

The selected DPIE monitoring sites that measure SO<sub>2</sub> include Rozelle, Bringelly, Chullora, Richmond, Bargo, Campbelltown and Cook and Phillip Park (Sydney CBD). 24-hour average SO<sub>2</sub> concentrations measured at White Bay are within the EPA criterion and are shown against those measured by DPIE stations in the region.

The highest 24-hour average SO<sub>2</sub> concentration (3 µg/m<sup>3</sup>) was recorded on 4 November.



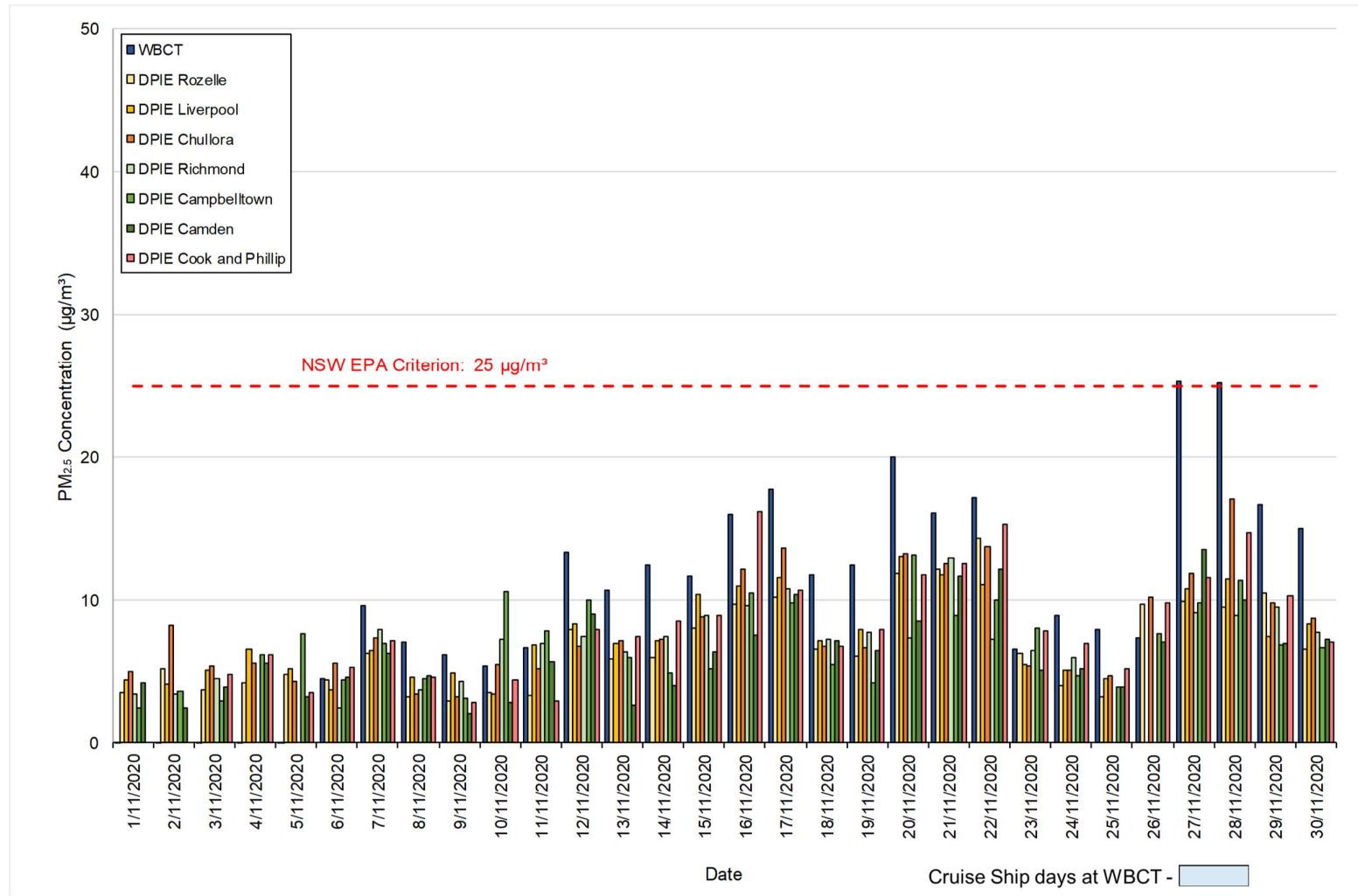


Note: Blue shading indicates cruise ship days, not arrival and departure times. Arrival and departure times are provided in Table 2.1. Zero data are graphed with a minor accentuation for visual purposes.

Figure 2-3: 24-hour average SO<sub>2</sub> concentrations at WBCT and DPIE monitoring sites

## 2.5 24-hour Average PM<sub>2.5</sub> Concentrations

Time-series plots of 24-hour average PM<sub>2.5</sub> concentrations at WBCT and selected DPIE monitoring sites are shown in Figure 2-4. Of the DPIE sites in Sydney, PM<sub>2.5</sub> is measured at a range of locations, including Rozelle, Liverpool, Chullora, Richmond, Campbelltown, Camden and Cook and Phillip.



Note: Blue shading indicates cruise ship days, not arrival and departure times. Arrival and departure times are provided in Table 2.1.

**Figure 2-4: 24-hour average PM<sub>2.5</sub> concentration at WBCT and DPIP monitoring sites**

PM<sub>2.5</sub> measurements were not collected between the 1<sup>st</sup> and 5<sup>th</sup> of November due to the completion of a background (zero) test on the instrument.

There were two recorded exceedances of the NSW EPA 24-hour PM<sub>2.5</sub> criterion (25 µg/m<sup>3</sup>) at WBCT in the month of November, on the 27<sup>th</sup> (25.3 µg/m<sup>3</sup>) and the 28<sup>th</sup> (25.1 µg/m<sup>3</sup>). The cause of these exceedances is not clear. In the absence of WBCT shipping operations, these monitoring results have not been investigated further.

## 2.6 Summary Statistics

Summary statistics for the SO<sub>2</sub> and PM<sub>2.5</sub> concentrations at WBCT are shown in Table 2-1.

**Table 2-1: Summary statistics for SO<sub>2</sub> and PM<sub>2.5</sub> concentrations at WBCT (µg/m<sup>3</sup>)**

Pollutant:	SO <sub>2</sub>			PM <sub>2.5</sub>
Averaging period:	10 minute	1 hour	24 hour	24 hour
Criterion:	712	570	228	25
Mean	0	0	1	10
Median	0	0	0	10
Standard deviation	1	1	1	8
Sample variance	1	1	1	63
Range	11	9	3	30
Minimum	0	0	0	-5
Maximum	11	9	3	25
Maximum (cruise ship day)	N/A	N/A	N/A	N/A

Note: N/A – Not Applicable due to the absence of cruise ships during the month of November.

### 3. METEOROLOGICAL DATA

A wind rose showing the frequency of counts by wind direction for the reporting period is shown in Figure 3-1. Guidance on the interpretation of wind roses is provided in the monthly reports prior to March 2018.

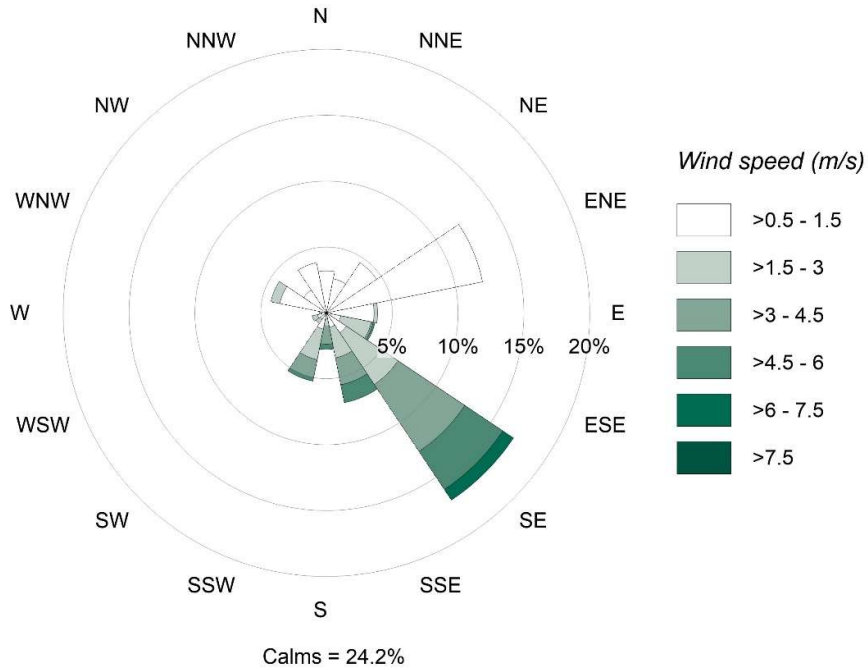


Figure 3-1: Wind rose for the reporting period

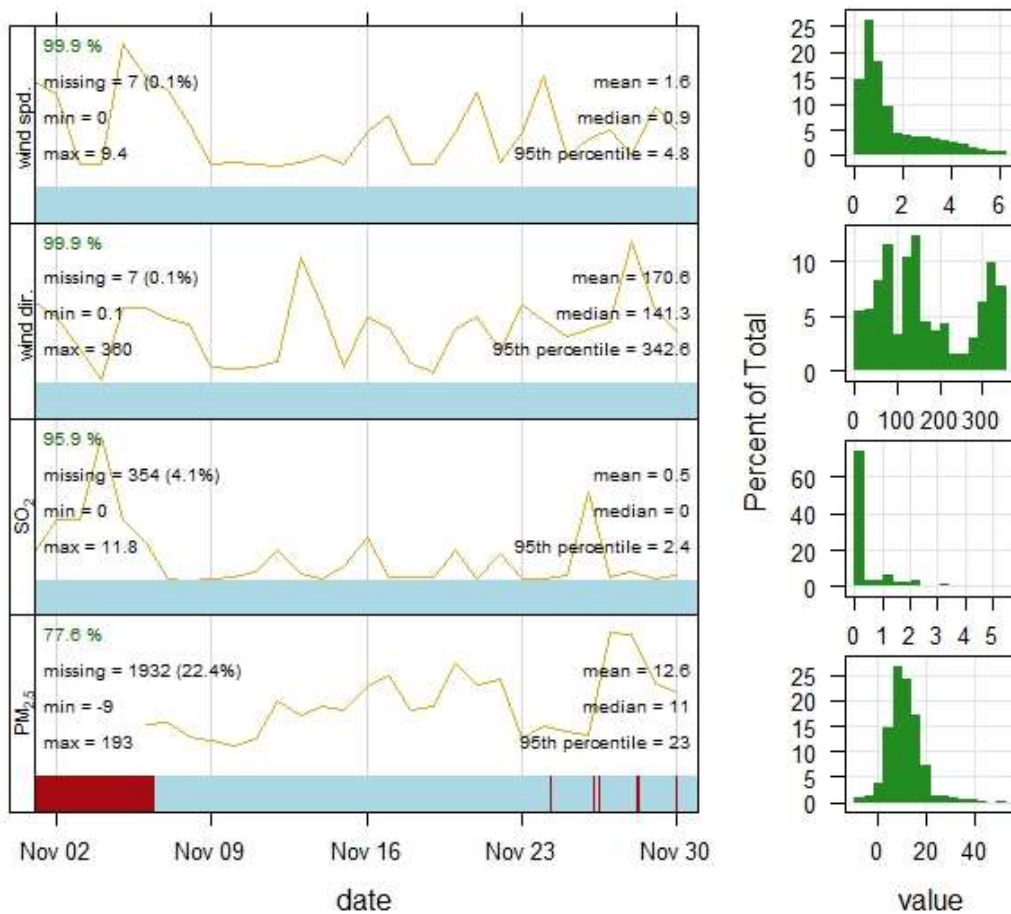
## 4. DATA AVAILABILITY

Data availability for SO<sub>2</sub> and PM<sub>2.5</sub> during the reporting period, based on the 5-minute average values, is shown in Table 4-1. An output summary and data distribution for 5-minute values of wind speed (m/s), wind direction, SO<sub>2</sub> (µg/m<sup>3</sup>) and PM<sub>2.5</sub> (µg/m<sup>3</sup>) concentrations are shown in Figure 4-1. Blue bars below each parameter represent captured data and the red bars represent missing data.

**Table 4-1: Data availability and summary statistics for SO<sub>2</sub> and PM<sub>2.5</sub>**

Statistic	SO <sub>2</sub> (5-minute)	PM <sub>2.5</sub> (1-hour)
Possible values	8,280	720
Missing values	354	161
Availability (%)	96	78
95 <sup>th</sup> percentile (µg/m <sup>3</sup> )	2.4	23

PM<sub>2.5</sub> measurements were not collected between the 1<sup>st</sup> and 5<sup>th</sup> of November due to a BAM background check was undertaken.



**Figure 4-1: Output summary and data distribution**

## 5. REFERENCES

NSW Environmental Protection Authority (EPA). 2017. The Approved Methods for the Modelling and Assessment of Air Pollutants in New South Wales, New South Wales Environment Protection Authority, January 2017.