

Port of Eden

Departure Passage Plan – Eden Cruise Wharf

Disclaimer:

The information contained in this plan is intended as a guide only and is for optimal conditions. The Pilot may vary from any of the given values stated in this plan at his / her discretion but will do so with the consultation of the bridge team.

Waypoint Table

Name	Lat		Long		Course	Distance	Turn Radius	Max XTD	
	Deg	Min	Deg	Min			NM	Port	Starboard
Berth	37 °	04.426'S	149 °	54.364'E	240° T	0.23'	N/A	60m	60m
Waypoint 4	37°	04.540'S	149°	54.113'E	148° T	0.50'	N/A	100m	100m
Waypoint 5	37°	04.966'S	149°	54.442'E	090°T	0.81'	0.5	200m	200m
Waypoint 6	37°	04.966'S	149°	55.453'E	072°T	1.98'	1.0'	400m	400m
Pilot Boarding Ground	37°	04.339'S	149 °	57.802'E					

Swing Basin Centre	37°	04.660'S	149°	54.171'E
--------------------	-----	----------	------	----------

Total	3.52
-------	------

Prior to Departure

- Engines Tested
- Steering Tested
- Anchors ready for emergency use

Pilot Ladder Arrangements

- Pilot ladder on lee side (Pilot will discuss during MPX)
- Ladder to be rigged to IMO standards 1.5m above the waterline, with 2 x man ropes
- Pilot disembarkation speed will be 6-7knots
- Position that Pilot will disembark from the ship will be agreed to during MPX
- Pilot Cutter will monitor VHF Ch 08

Note: At the Pilot's discretion, control of the vessel for unberthing and swinging may rest with ship's staff, but under NSW Marine Safety Act, the Conduct of the vessel remains with the Pilot at all times.

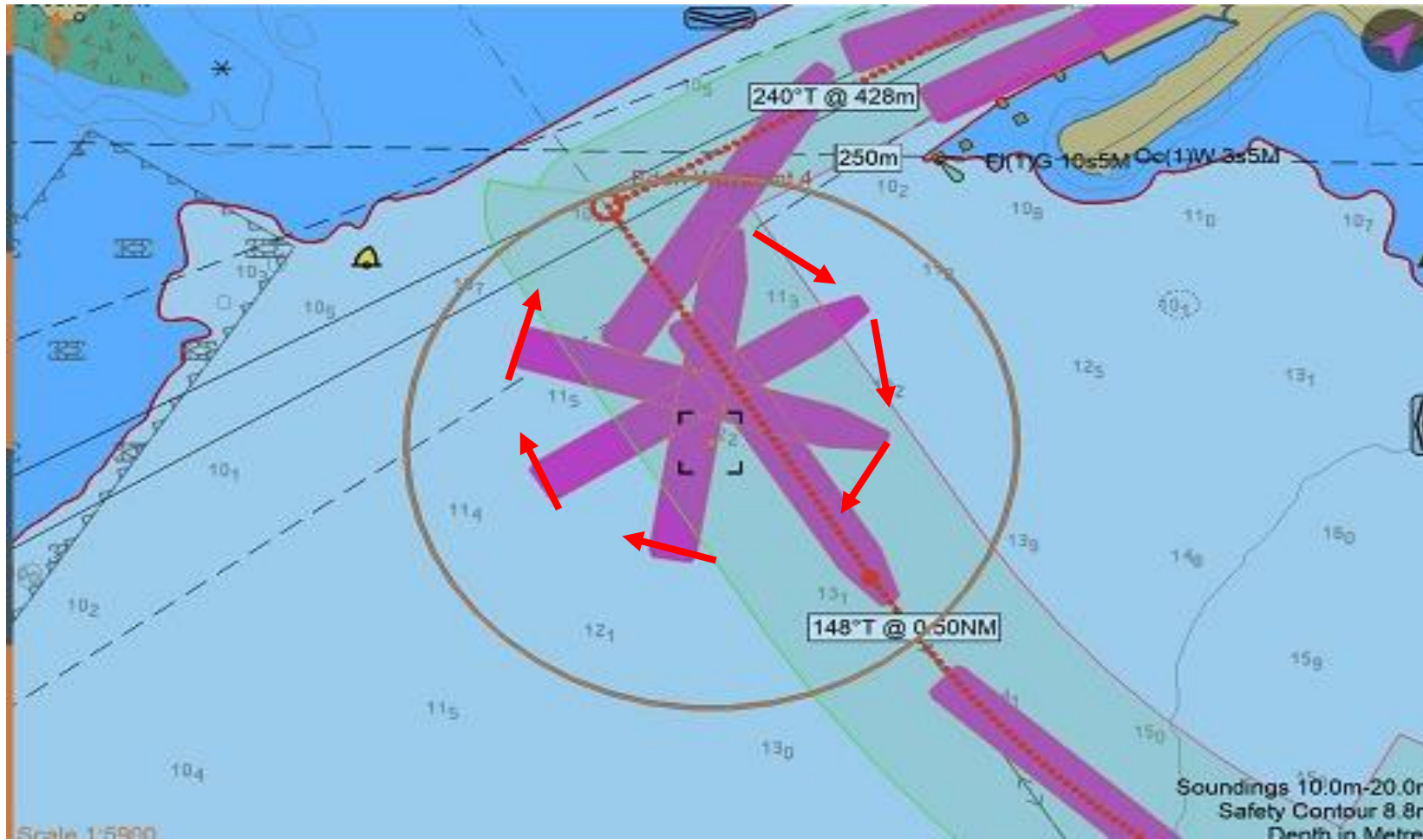
Berth to Waypoint 4 (displayed vessel is 317m x 39m)

Course	Max Speed	Distance	Max XTD to Port	Max XTD to Starboard
060°T	2 knots	0.23'	60m	60m



Waypoint 4 to Waypoint 5 (Swing Basin)

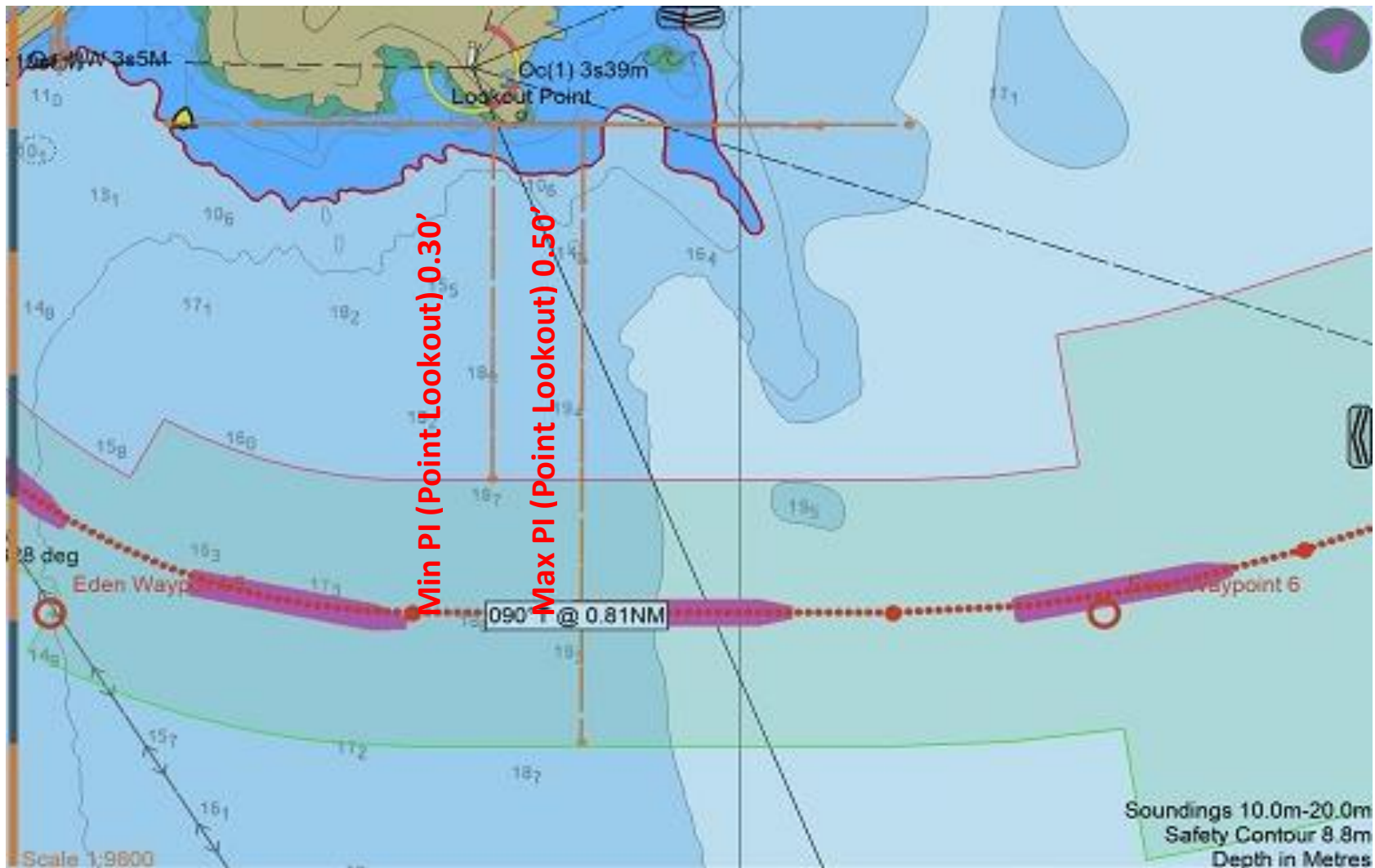
Course	Max Speed	Distance	Max XTD to Port	Max XTD to Starboard	ROT(WP5)	4 knots	3 knots
148°T	4 knots	0.50'	100m	100m		8° / min	6° / min



- Swing Basin is 500m in Diameter
- Vessel will generally swing bow to starboard. Pilot will advise separately if swing bow to port is necessary
- Vessel's stern not to cross into red sector of berthing PEL
- Vessel's staff may (at the pilot's discretion) have control of the vessel for swing. On completion of swing control will be transferred to pilot

Waypoint 5 to Waypoint 6

Course	Max Speed	Distance	Max XTD to Port	Max XTD to Starboard	ROT(WP6)	7 knots	6 knots
090°T	7 knots	0.81'	185m	185m		7° / min	6° / min



Waypoint 6 to Waypoint 7

Course	Max Speed	Distance	Max XTD to Port	Max XTD to Starboard
072°T	10 knots	1.98'	400m	400m



- Pilot Disembarkation – see notes on Page 1
- Thank you for calling at the Port of Eden, we hope you've enjoyed your time here. Please have a safe voyage to your next port, and we look forward to seeing you next time.

