

# Port of Eden

## Arrival Passage Plan – Eden Cruise Wharf

### **Disclaimer:**

The information contained in this plan is intended as a guide only and is for optimal conditions. The Pilot may vary from any of the given values stated in this plan at his / her discretion but will do so with the consultation of the bridge team.

## Waypoint Table

WP	Name	Lat		Long		Course	Distance	Turn Radius	Max XTD	
		Deg	Min	Deg	Min			NM	Port	Starboard
0	Pilot Boarding Ground	37 °	4.339'	149 °	57.802'	242°T	2.19'	N/A	400 m	400 m
1	Waypoint 1	37 °	5.364'	149 °	55.388'	270°T	1.09'	0.500'	200 m	200 m
2	Waypoint 2	37 °	5.364'	149 °	54.028'	000°T	0.79'	0.500'	100 m	100 m
3	Waypoint 3	37 °	4.577'	149 °	54.028'	061°T	0.31'	0.250'	60 m	60 m
4	Berth	37 °	4.426'	149 °	54.364'					

Total	4.13'
-------	-------

### Pilot Boarding

- Pilot will call on VHF 08 to confirm which side Pilot Ladder
- Pilot ladder to be rigged to IMO standards 1.5m above the waterline, 2 x Man Ropes
- Engines to be tested astern prior to pilot boarding
- Anchors ready for emergency use
- Boarding Speed will be approx. 6-7knots
- Vessel to maintain boarding speed until Pilot is on the bridge

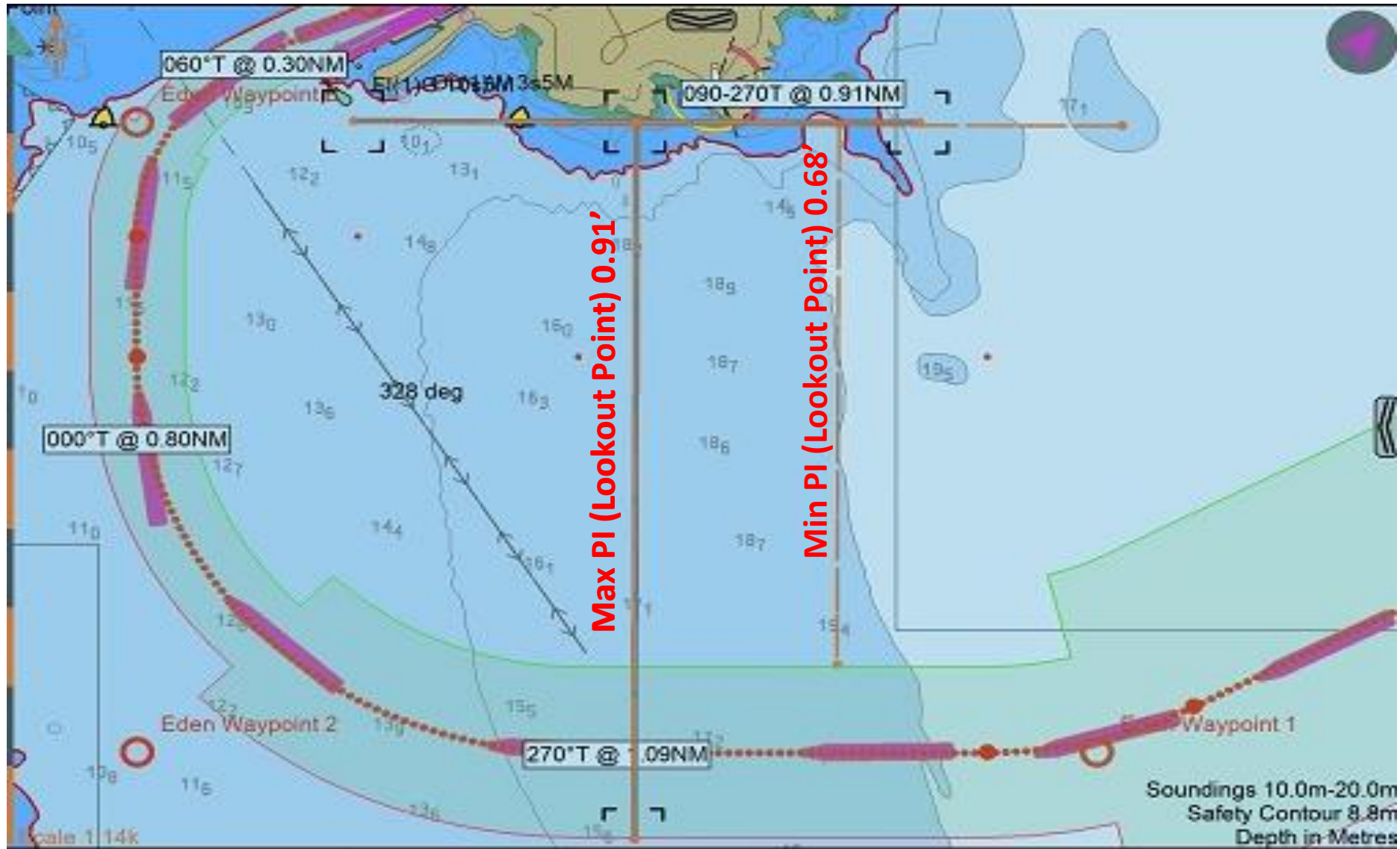
### Pilot Boarding to Waypoint 1

Course	Max Speed	Distance	Max XTD to Port	Max XTD to Starboard	ROT (WP1)	8 knots	6 knots
242°T	8 knots	2.19'	400m	400m		16° / min	12° / min



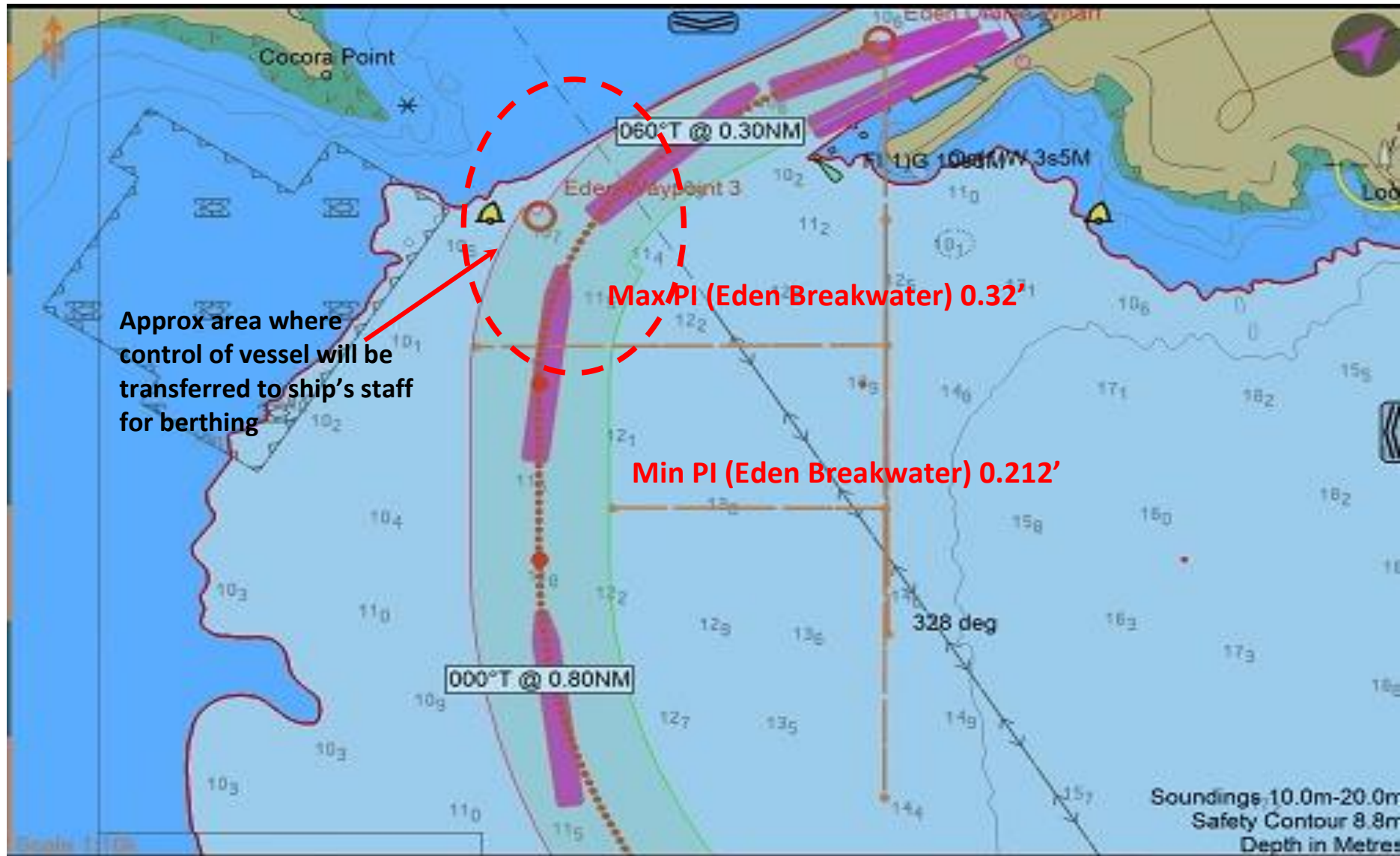
### Waypoint 1 to Waypoint 2

Course	Max Speed	Distance	Max XTD to Port	Max XTD to Starboard	ROT(WP2)	6 knots	5 knots
270°T	6 knots	1.09'	200m	200m		12° / min	10° / min



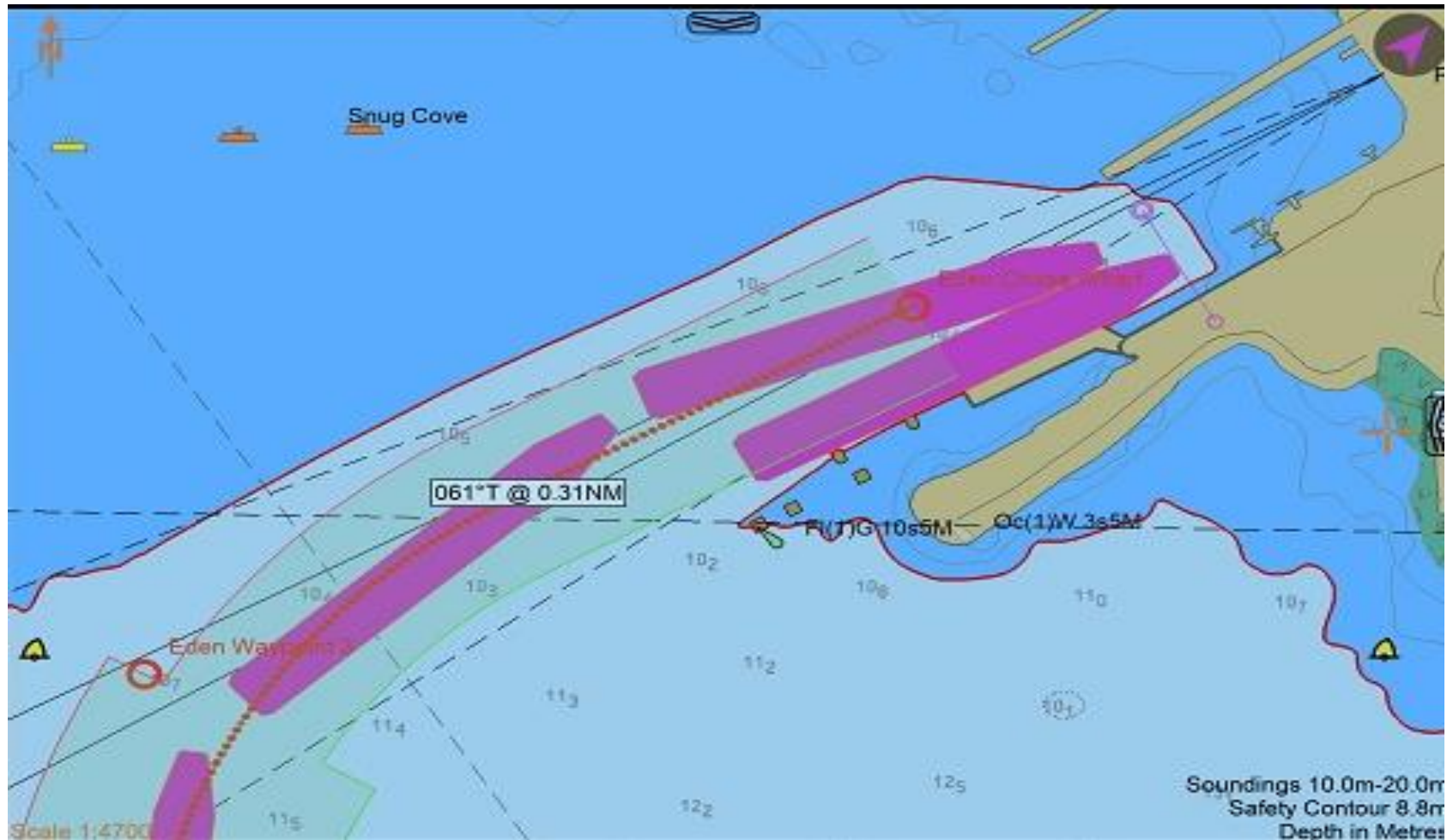
### Waypoint 2 to Waypoint 3

Course	Max Speed	Distance	Max XTD to Port	Max XTD to Starboard	ROT(WP3)	4 knots	3 knots
000°T	4 knots	0.79'	100m	100m		16° / min	12° / min



### Waypoint 3 to Cruise Wharf (displayed vessel is 317m x 39m)

Course	Max Speed	Distance	Max XTD to Port	Max XTD to Starboard
060°T	2 knots	0.3'	60m	60m



**Notes** Line of Berth 061°/241°  
Vessel's bow not be east of -70m mark  
Declared Depth 10.5m

Under NSW Marine Safety Act – Control of vessel can be transferred to ship's staff but Conduct of vessel remains with pilot at all times.