

# BIG SHIPS SMALL BOATS

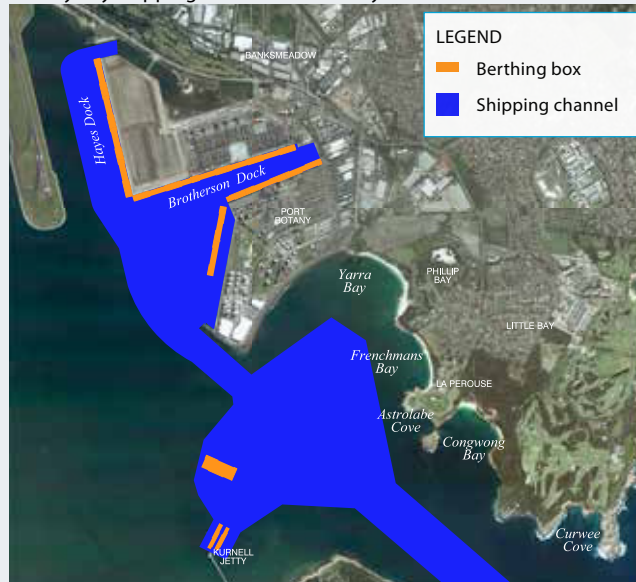
The ports of Sydney Harbour and Botany Bay have a proud history of sea trade. Sydney's ports facilitate over \$61 billion of trade each year, with an annual contribution to the New South Wales economy in excess of \$5 billion.

With hundreds of seagoing ship and large commercial vessel movements on these confined waterways, it is important skippers understand their responsibilities to ensure safety afloat for all concerned.

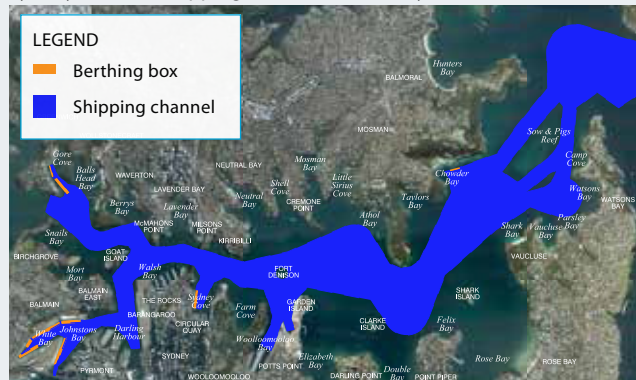
## Simple steps to stay safe near seagoing ships

- ✓ Always keep a lookout for seagoing ships.
- ✓ Determine if the vessel is moving towards you or away from you.
- ✓ Always keep a safe distance away from a large vessel.
- ✓ Act early so you can move away from these seagoing ships and also make sure that they can clearly understand what you are doing.
- ✓ Always have your navigation lights on at night so other vessels can clearly see you.
- ✓ Familiarise yourself with the shipping channels or fairways.
- ✓ Stay clear of the channels or fairways when seagoing ships are entering or departing the ports.
- ✓ Be aware of wakes of seagoing ships, particularly when the large vessel is in relatively shallow water and moving at higher speeds.

Botany Bay shipping channels or fairways



Sydney Harbour shipping channels or fairways



Under the NSW Marine Safety Act 1998 you are required by law to:

Never obstruct or impede –

- ☒ access to a fairway or channel;
- ☒ the use of any wharf, jetty, slip or landing place;
- ☒ the launching, exiting or securing of a vessel;
- ☒ the handling of cargo or movement of passengers;
- ☒ the safe navigation of a vessel.

For full details of the NSW Marine Safety Act 1998 please go to [http://www.sydneyports.com.au/port\\_operations/port\\_safety](http://www.sydneyports.com.au/port_operations/port_safety)



# STEER CLEAR

## SAFETY NOTICE TO ALL BOAT OPERATORS

- Your vessel has been approached because it is:
- Anchored in a channel or fairway or
  - Obstructing or restricting a fairway or channel or
  - Obstructing the safe navigation of a vessel

# STEER CLEAR



SAFETY PARTNER



SAFETY PARTNER



# STEER CLEAR

SAFETY NOTICE TO ALL BOAT OPERATORS

Before heading out, check the Daily Vessel Movements page on the Port Authority Website: [www.portauthoritynsw.com.au](http://www.portauthoritynsw.com.au)  
Listen to the safety broadcast from "Sydney Ports VTS" on VHF Channel 13 at 5 minutes past each odd hour for details of vessel movements.

Monitor VHF Channel 13 for position reports from vessels. Always keep a lookout for seagoing ships and STEER CLEAR of them.



Do not pass between the escort vessel and seagoing ship



Escort vessel identified by orange hull, yellow structure and red and blue flashing lights

24 HOUR HARBOUR OPERATIONS

**VHF CHANNEL 13**



**PORT AUTHORITY**  
OF NEW SOUTH WALES

# STEER CLEAR

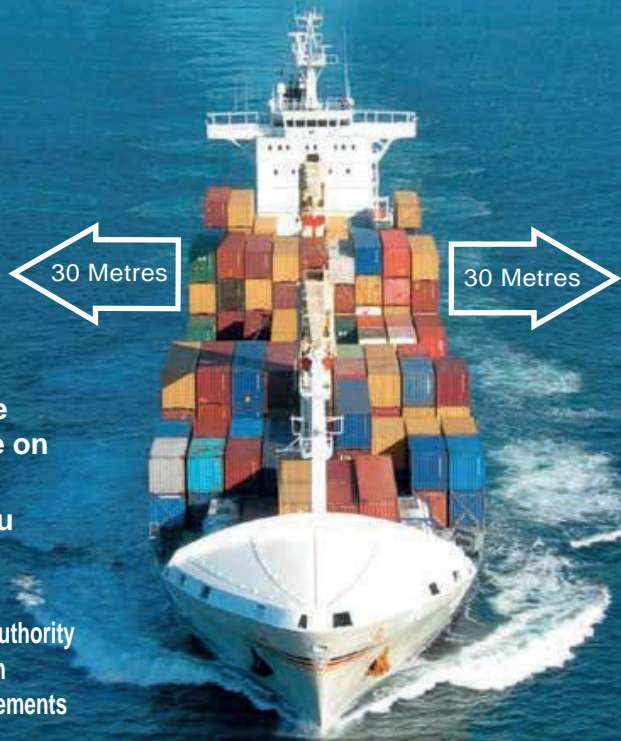
SAFETY NOTICE TO ALL BOAT OPERATORS

Before heading out, check the  
Daily Vessel Movements page on  
the Port Authority Website:  
[www.portauthoritynsw.com.au](http://www.portauthoritynsw.com.au)

- ✓ Listen to the safety broadcast from port authority  
24/7 Vessel Traffic Service (VTS) centre on  
VHF Channel 12 for details of vessel movements
- ✓ Monitor VHF Channel 12 for position reports  
from vessels
- ✓ Always keep a lookout for seagoing ships and  
STEER CLEAR of them

24 HOUR HARBOUR OPERATIONS

## VHF CHANNEL 12



Do not pass between the escort  
vessel and seagoing ship



Escort vessel identified by  
orange hull, yellow structure  
and red and blue flashing  
lights