

## PORT AUTHORITY OF NSW HERITAGE INVENTORY

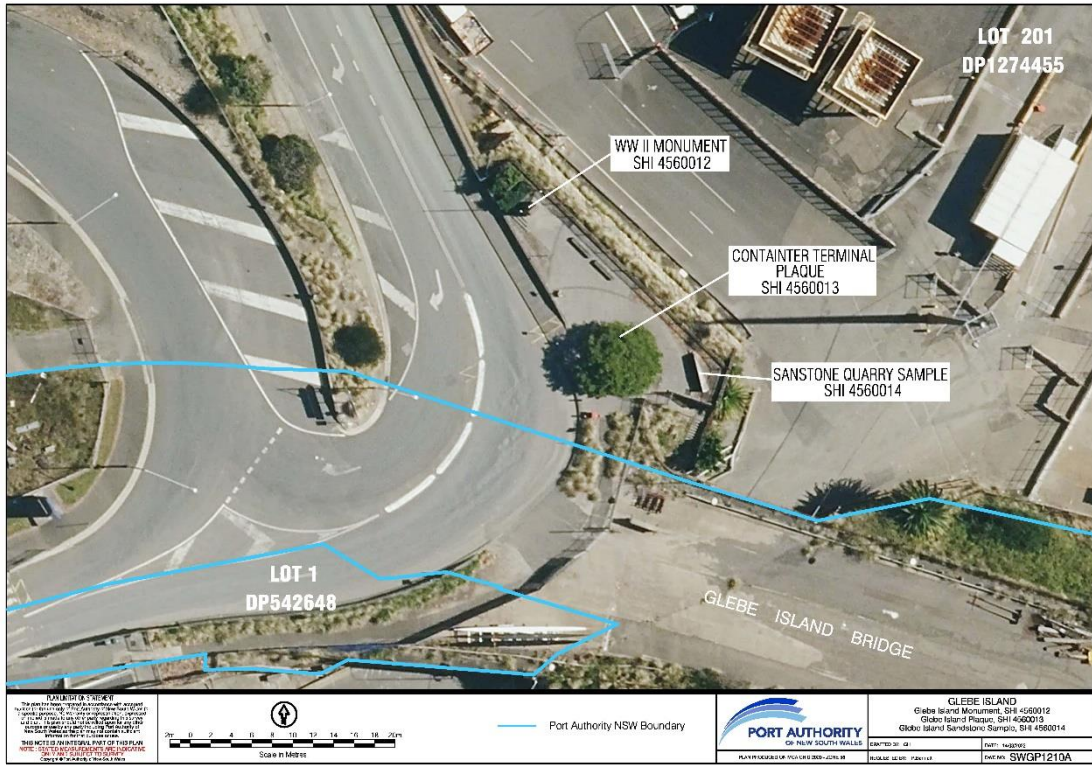
### State Heritage Inventory

SHI Number: 4560013		Study Number: N/A	
Item Name: Glebe Island Plaque - Opening of Container Terminal			
Location: Glebe Island (Rozelle)			
Address: Monument Lookout, Sommerville Road, Rozelle		DUAP Region: Sydney South	
Suburb / Nearest Town: Rozelle 2039		Historic Region: Sydney	
Local Govt Area: Inner West		Parish: Petersham	
State: NSW		County: Cumberland	
Other/Former Names:			
Area/Group/Complex:		Group ID:	
Aboriginal Area: Wangal			
Curtilage/Boundary:			
Item Type: Movable / Collection	Group: Monuments and Memorials		Category: Other - Monuments & Memorials
Owner: Port Authority of New South Wales			
Current Use: Interpretation			
Former Uses:			
Assessed Significance: Local		Endorsed Significance:	
Statement of Significance: The plaque is of local historical significance as it commemorates the opening of the Container Terminal at Glebe Island. The Container Terminal was an important innovation in the operation of the port and was a direct response to changes in international shipping.			
Historical Notes or Provenance:  <p>The Glebe Island Container Terminal was officially opened by Premier Robert Askin on 22 February 1973. It was constructed by the former Maritime Services Board (MSB) at a cost of \$13 million but quickly drew criticism for its inefficient operations and harbour congestion. The Glebe Island Plaque was unveiled by Askin during the official opening of the Container Terminal.</p> <p>The ports under Maritime Services Board administration handled record tonnages. Ship design was improved to cope with the growth in sea trade and they increased in size allowing for increases in bulk cargoes. Improvements included containerisation, roll-on, roll-off vessels, side loading ships and special purpose carriers. These innovations required changes to port facilities to facilitate the handling of containers and other bulk cargo. The construction work for the new container terminal once again dramatically altered the face of the island.</p> <p>During further remodeling and development at the port in 2004 the plaque was moved to a more prominent site and interpretation was provided.</p>			
Themes:	National Theme:	State Theme:	Local Theme:

	3. Economy	Transport	(none)
	9. Phases of Life	Events	(none)
Designer:			
Maker / Builder:			
Year Started:	Year Completed: 1973	Circa: No	
<p>Physical Description: Cut sandstone block with brass plaque set in. The inscription reads:</p> <p><i>The Maritime Services Board of NSW Glebe Island Container Terminal.</i></p> <p><i>This plaque commemorates the opening of The Glebe Island Container Berths and associated Facilities on 22nd February 1973 by:</i></p> <p><i>The Hon. Sir Robert Askin K.C.M.G. M.L.A. Premier and Treasurer of New South Wales.</i></p> <p><i>W H Brotherson President</i></p> <p><i>J M Wallace Engineer-in-Chief</i></p>			
Physical Condition: The sandstone block and bronze plaque are in generally good condition, with a minor level of environmental grime (specifically algae) covering the stone.			
Modification Dates:			
2004 - moved to allow remodeling of Glebe Island facilities. As part of the remodeling, the plaque was moved to an accessible area at Monument Lookout.			
Recommended Management: Retain in situ and conserve			
Preparation of a Maintenance and Conservation Works Schedule to ensure acceptable condition and assist in long-term conservation (potentially covering all Glebe Island Monuments and Interpretive items)			
Management: Statutory Instrument			
Further Comments:			
Criteria a) The plaque itself is of local historical significance as it commemorates the opening of the Container Terminal at Glebe Island. The Container Terminal was an important innovation in the operation of the port and was a direct response to changes in international shipping.			
Criteria b)			
Criteria c) As an active port that is constantly evolving to meet current commercial needs there is little remaining fabric relating to the container terminal.			
Criteria d)			
Criteria e)			
Criteria f)			
Criteria g)			
Integrity / Intactness: The plaque and sandstone block while moved from its original location appear in generally good condition, unchanged from its original form, subsequently the item is considered intact.			
References:	Author:	Title:	Year:
		Opening ceremony Glebe Island Container Terminal	1973

		Construction of the Container terminal			1971
	Susan McIntyre Tamwoy		Glebe Island Interpretation Project Collation for information of Sydney Ports		2004
Studies:	Author:		Title:	Number:	Year:
	Susan McIntyre-Tamwoy Heritage Consultants		Sydney Ports Corporation Heritage and Conservation Register		2004
	Mayne -Wilson and Associates		Heritage Impact Assessment. App 5 to REF Roadworks Glebe Island Rozelle		2002
Parcels:	Parcel Code:	Lot Number:	Section:	Plan Code:	Plan Number:
Latitude: -33.867284			Longitude: 151.183367		
Listings:	Name:		Title:	Number:	Date:
	Heritage Act – S.170 NSW State agency heritage register		Glebe Island Plaque - Opening of Container Terminal	4560013	1/07/2 004
Data Entry:	Date First Entered:	Date Updated:			Status:
	29/06/2004	19/12/2022			Basic

Image: 1



Caption: Glebe Island Plaque- Opening of Container Terminal Location Plan

Copyright: Port Authority of New South Wales

Image By: Port Authority of New South Wales

Image Date: 14/03/2023

Image File: SWGP1210A\_Final

Image: 2



Caption: Glebe Island Plaque- Opening of Container Terminal

Copyright: Port Authority of New South Wales

Image By: Susan McIntyre-Tamwoy Heritage Consultants

Image Date: 20/12/2004

Image File: 4560013b1.jpg

Image: 3



Caption: Glebe Island Plaque – Opening of Container Terminal - front

Copyright: Port Authority of New South Wales

Image By: Zach Nix - NBRS

Image Date: 05/10/2022

Image File: 4560013b2.jpg

Image: 4



Caption: Glebe Island Plaque – Opening of Container Terminal - rear

Copyright: Port Authority of New South Wales

Image By: Zach Nix - NBRIS

Image Date: 05/10/2022

Image File: 4560013b3.jpg

Image: 5



Caption: Glebe Island Plaque – Opening of Container Terminal, plaque close-up

Copyright: Port Authority of New South Wales

Image By: Zach Nix - NBRS

Image Date: 05/10/2022

Image File: 4560013b4.jpg