

PORT AUTHORITY OF NSW HERITAGE INVENTORY

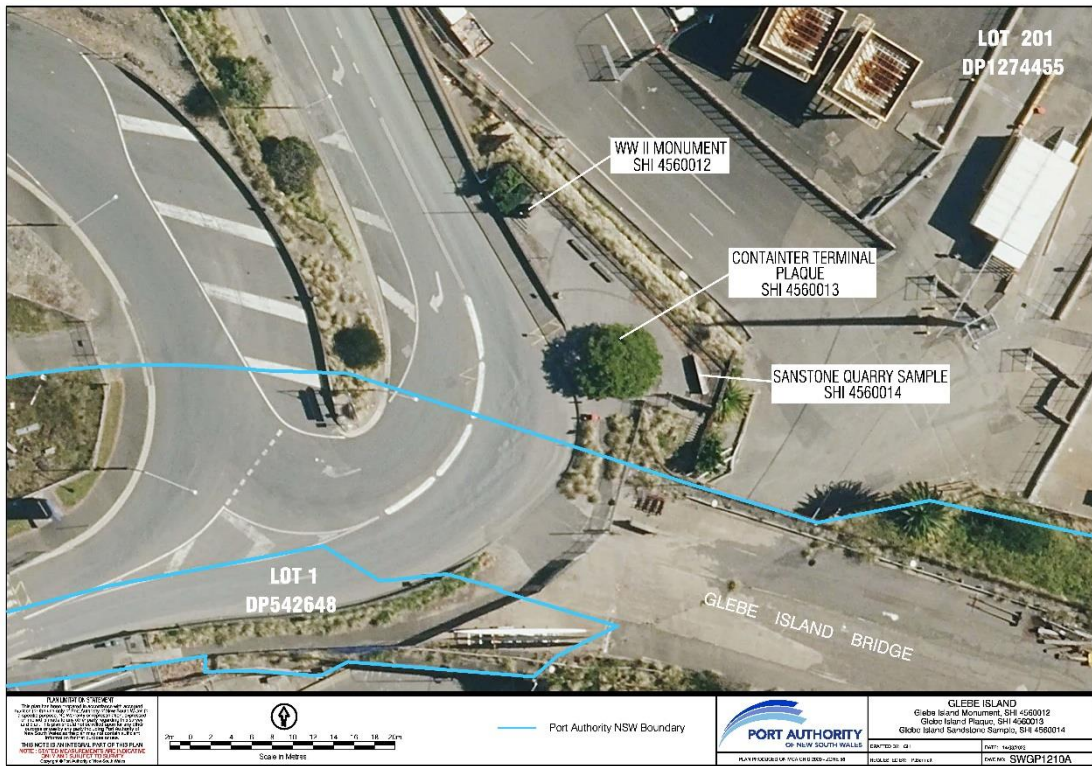
State Heritage Inventory

SHI Number: 4560014		Study Number: N/A	
Item Name: Glebe Island Sandstone Quarry Sample			
Location: Glebe Island (Rozelle)			
Address: Monument Lookout, Sommersville Road, Rozelle		DUAP Region: Sydney South	
Suburb / Nearest Town: Rozelle 2039		Historic Region: Sydney	
Local Govt Area: Inner West		Parish: Petersham	
State: NSW		County: Cumberland	
Other/Former Names: Saunders Quarry			
Area/Group/Complex:		Group ID:	
Aboriginal Area: Wangal			
Curtilage/Boundary:			
Item Type: Moveable / Collection	Group: Mining and Mineral Processing		Category: Quarry
Owner: Port Authority of New South Wales			
Current Use: Interpretation			
Former Uses:			
Assessed Significance: Local		Endorsed Significance:	
Statement of Significance: Of local significance in illustrating the range of early industries that once occupied Glebe Island and surrounding areas, especially sandstone quarrying, which was an important local industry.			
Historical Notes or Provenance: The rocky outcrop known as Glebe Island was originally accessible from the Balmain shoreline only at low tide until a causeway was laid in the 1840s (Peter Reynolds, 'Glebe Island', Dictionary of Sydney). The quarrying of sandstone, boatbuilding and iron foundries were among the earliest industries in the area. From the 1840s until the end of the nineteenth century, quarrymen hewed down the isolated western half of the nearby Pyrmont peninsula for sandstone. Uncounted tons of Pyrmont 'yellowblock', as it was known, were carted into the city to build the great public buildings which remain the signature of Sydney's nineteenth-century built form. The quarries were known locally as 'Paradise', 'Purgatory' and 'Hellhole', in recognition of the difficulty of working the stone (Shirley Fitzgerald, 'Pyrmont', Dictionary of Sydney). In 1850-54 the colonial architect, Edmund Blacket, designed sandstone buildings for a public abattoir on the island. It consisted of two parallel ranges of sandstone buildings, each 220 feet in length with one consisting of 12 slaughterhouses for beef and the other 12 slaughterhouses for sheep. Double steam punts operated between the island and the western shore of Pyrmont. The Glebe Island Abattoir opened in October 1860.			

<p>In 1861 the first timber bridge across the channel was opened. Known as Blackbutt Bridge, because it was constructed out of Tasmanian blackbutt logs, the bridge included a hand-cranked manual lift-span, opening to allow shipping to pass through to the bays. The Blackbutt Bridge remained in service until replaced by the second Glebe Island Bridge in 1903 (Mark Dunn, 'Glebe Island Bridge', Dictionary of Sydney).</p> <p>In the early years of quarrying the softer accessible sandstone was able to be easily quarried with picks and hand tools. As the years progressed these deposits were exhausted, and new technology was required to economically extract the stone. The sample found in 2003 (item 4560014) shows evidence of hand picks on its surface rather than the more modern techniques involving abrasion saws and blasting. The sample salvaged therefore is more likely to date from the early quarries such as those used to quarry the blocks for the abattoir.</p>			
Themes:	National Theme: 3. Economy	State Theme: Mining	Local Theme: (none)
Designer:			
Maker / Builder:			
Year Started: 1857	Year Completed: 1870	Circa: Yes	
Physical Description: Salvaged block of sandstone with identifiable pick marks evident across its surface. The block which was removed from a quarried rock face prior to roadworks in 2003-4 to a landscaped bed at the edge of Monument Lookout off Sommerville Road, Rozelle.			
Physical Condition: The item has not been identified as having any notable condition issues.			
Modification Dates: Quarrying commenced on Glebe Island in the mid to late 1850's. 1916 Saunder introduced modern technology including a special saw for cutting sandstone blocks. Abrasion saws were required to remove the harder sandstone remaining. In 2004 it was placed in a prominent area above Glebe Island.			
Recommended Management: Retain in situ and conserve			
Preparation of a Maintenance and Conservation Works Schedule to ensure acceptable condition and assist in long-term conservation (potentially covering all Glebe Island Monuments and Interpretive items)			
Investigate production of an interpretive instrument to provide context to item, given potential improved access as part of future White Bay redevelopment.			
Management: Statutory Instrument			
Further Comments:			
Criteria a) Of local significance in illustrating the range of early industries that once occupied Glebe Island, especially the sandstone quarrying which was an important local industry in the area.			
Of some significance in interpreting the total modification of the natural topography of Glebe Island through quarrying and land reclamation.			
Criteria b) Association with Charles Saunders and his son a successful and influential stone mason from the Pymont area.			
Criteria c)			
Criteria d)			
Criteria e)			

Criteria f)					
Criteria g)					
Integrity / Intactness: The sandstone block is in generally good condition and appears completed from its original form, subsequently the item is considered intact.					
References:	Author:		Title:		Year:
	<i>Sydney Morning Herald</i>		'Removal of the Slaughter-houses from Sydney'		2 October 1860, page 5
	Government Printers Office		Saunders Quarry at Glebe Island		1910
	NSW Govt Printers Office		The gates Abbatoirs Glebe Island		1870
	Susan McIntyre-Tamwoy		Glebe Island Interpretation Project Collation of information for Sydney Ports		2004
	Peter Reynolds		Glebe Island, Dictionary of Sydney, http://dictionaryofsydney.org/entry/glebe_island		2008
	Shirley Fitzgerald		Pymont, Dictionary of Sydney, https://dictionaryofsydney.org/entry/pymont		2008
	Mark Dunn		'Glebe Island bridge', Dictionary of Sydney, https://dictionaryofsydney.org/entry/glebe_island_bridge		2008
	Pymont History Group		Glebe Island, https://pymonthistory.net.au/glebe-island		2011
Studies:	Author: Susan McIntyre-Tamwoy		Title: Proposed Roadworks at Glebe Island: Archaeological Assessment		Number: Year: 2002
Parcels:	Parcel Code:	Lot Number:	Section:	Plan Code:	Plan Number:
Latitude: -33.86734			Longitude: 151.183433		
Listings:	Name: Heritage Act – S.170 NSW State agency heritage register		Title: Glebe Island Sandstone Quarry Sample		Number: 4560014 Date: 1/07/2004
Data Entry:	Date First Entered: 29/06/2004		Date Updated: 19/12/2022		Status: Basic

Image: 1



Caption: Glebe Island Sandstone Quarry Sample Location Plan

Copyright: Port Authority of New South Wales

Image By: Port Authority of New South Wales

Image Date: 14/03/2023

Image File: SWGP1210A_Final

Image: 2



Caption: Glebe Island Sandstone Quarry Sample

Copyright: Port Authority of New South Wales

Image By: Susan McIntyre-Tamwoy Heritage Consultants

Image Date: 20/12/2004

Image File: 4560014b1.jpg

Image: 3



Caption: Saunders Quarry Glebe Island in 1916. State Library NSW. Order #GPO1-24421

Copyright: State Library NSW

Image By: Government Printers Office

Image Date: 16/11/1916

Image File: 4560014b2.jpg

Image: 4



Caption: Glebe Island Sandstone Quarry Sample

Copyright: Port Authority of New South Wales

Image By: Zach Nix - NBRIS

Image Date: 05/10/2022

Image File: 4560014b3.jpg

Image: 5



Caption: Glebe Island Sandstone Quarry Sample – Side profile

Copyright: Port Authority of New South Wales

Image By: Zach Nix - NBRIS

Image Date: 05/10/2022

Image File: 4560014b4.jpg

Image: 6



Caption: Glebe Island Sandstone Quarry Sample – Close up of pick marks

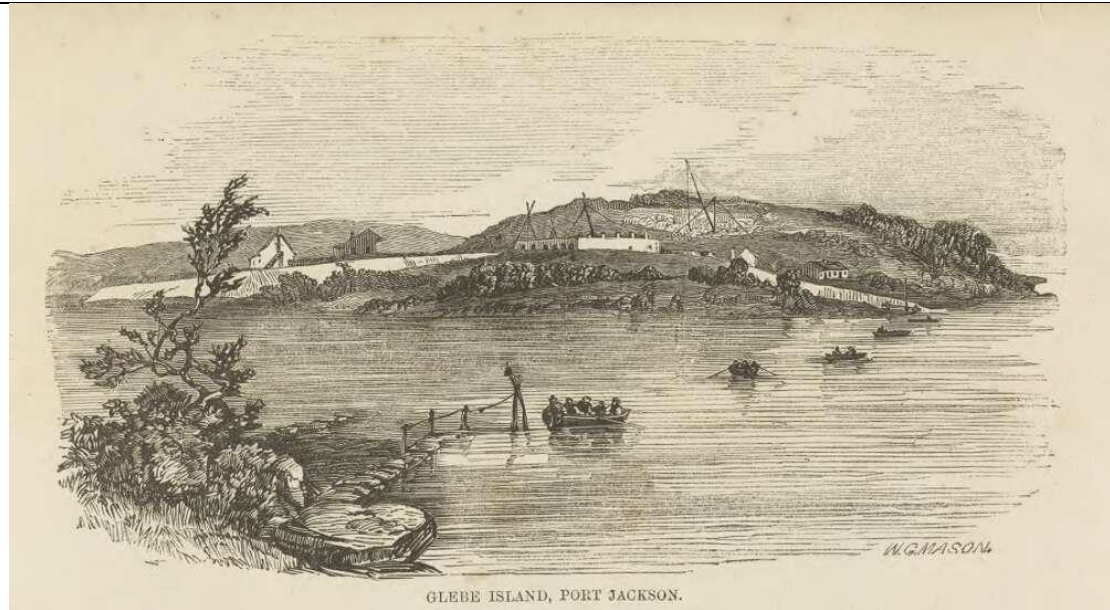
Copyright: Port Authority of New South Wales

Image By: Zach Nix - NBRS

Image Date: 05/10/2022

Image File: 4560014b4.jpg

Image: 7



Caption: Wood engraving of Glebe Island, Port Jackson

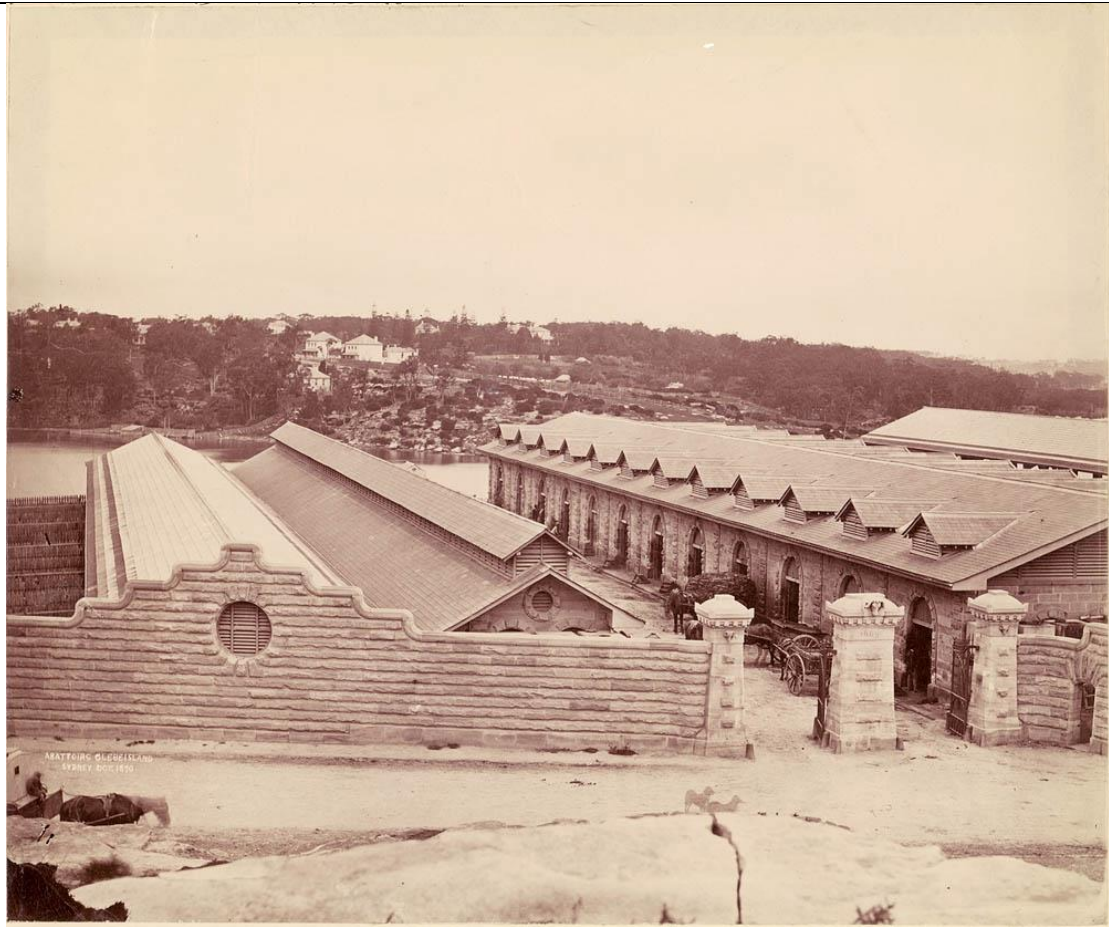
Copyright: Out of copyright, image courtesy of National Library of Australia, PIC Volume 6A #S1231

Image By: Walter G Mason

Image Date: 1857

Image File: 4560014b5.jpg

Image: 8



Caption: Abattoirs at Glebe Island, Sydney

Copyright: Out of copyright, image courtesy of State Library of New South Wales, SPF/664

Image By: Charles Percy Pickering

Image Date: October 1870

Image File: 4560014b6.jpg

Image: 9



Caption: Blackbutt Bridge [first Glebe Island Bridge]

Copyright: Out of copyright, image courtesy of State Library of New South Wales, ON 4 Box 58 No 281

Image By: American & Australasian Photographic Company

Image Date: 1870-75

Image File: 4560014b7.jpg