

PORT AUTHORITY OF NSW HERITAGE INVENTORY

State Heritage Inventory

SHI Number: 4560034		Study Number: N/A	
Item Name: Blues Point Light Structure			
Location: Blues Point Reserve, McMahons Point			
Address:		DUAP Region: Sydney North	
Suburb / Nearest Town: McMahons Point, 2060		Historic Region: Sydney	
Local Govt Area: North Sydney		Parish: Willoughby	
State: NSW		County: Cumberland	
Other/Former Names: Blues Point Light			
Area/Group/Complex: Category 2 Aid to Navigation - Port Safety Operating Licence (SYD-034)		Group ID: 2	
Aboriginal Area: Warungareeyuh (Blues Point), Cammeraygal			
Curtilage/Boundary: Bounded by the edge of Blues Bay and Blues Point Reserve			
Item Type: Built	Group: Maritime Industry	Category: Harbour Lights	
Owner: Port Authority of NSW			
Current Use: Aids to navigation under the Port Safety Operating Licence.			
Former Uses:			
Assessed Significance: Local		Endorsed Significance:	
<p>Statement of Significance: The Blues Point Light Structure is of significance for its historic use as a navigation aid employed in Sydney Harbour during the early 20th century. During its use it was an integral component of the navigational system ensuring the safe operation of the harbour. The structure was likely introduced to its original location in Millers Point as a direct response to boat collisions in the area.</p> <p>While removed from its original location in Millers Point, the structure provides an example of the different types of navigational structures installed as part of the wider push to increase navigational aid in Sydney Harbour at the start of the twentieth century. Particularly as a representation of the growing utilisation of steel lattice or truss structures in public infrastructure works at the end of the nineteenth and beginning of the twentieth centuries.</p>			
<p>Historical Notes or Provenance:</p> <p>Photographs dating from the 1870s indicate a structure was present at Blues Point, which may have operated as a navigational marker (image 6). Later photographs dating around the 1920s indicate a cylindrical light structure was present on the point (image 8) which may have been altered to feature a light structure of boxy appearance pictured in images 9 to 12. The site was described in the North Shore Historical Society Journal as originally featuring a 'rather appealing lattice-work wooden tower' which was replaced by item 4560034 in 1977-78.</p> <p>The first light at Millers Point was constructed in 1904. To facilitate the navigation of the port, eastward of Dawes Point a redlight has been erected on that point and two fixed green leading lights on Goat Island</p>			

<p>and a white light with a red sector to mark the turning point to Darling Harbour at Millers Point' (Sydney Harbour Trust Commissioners Annual Report 1904).</p> <p>The current structure was moved from Millers Point to Blues Point in 1977-78 during reconstruction of the wharf at the Northern end of Darling Harbour on Millers Point (this is now Known as No 3 but was formerly No 1 Darling Harbour). See image 14 which possibly shows item 4560034 at Millers Point prior to its relocation to Blues Point.</p> <p>Further research is recommended to ascertain the construction of item 4560034 prior to its installation at Millers Point in 1904.</p>			
Themes:	National Theme: 3. Economy	State Theme: Transport	Local Theme: None
Designer: unknown			
Maker / Builder: unknown			
Year Started: 1904	Year Completed: 1904	Circa: No	
Physical Description: Lattice steel structure of a cylindrical shape with light. Green light ISO 2 seconds, 1 on 1 off. The structure is fenced off at the ground level by a mesh box structure for security purposes.			
Physical Condition: The tower structure is in generally good condition; however, it has been noted that the structure is experiencing sporadic areas of rust and extensive paint delamination throughout.			
Modification Dates: C1908 - current structure Red Lamp changed to Two-Sector Light 1977-78 - Moved from Millers Point to Blues Point during reconstruction of wharves at Millers Point			
Recommended Management: Retain and conserve. Further research is recommended to ascertain the construction of item 4560034 prior to its installation at Millers Point in 1904, potentially accessing the archives of North Sydney's Stanton Library Heritage Centre, State Records and Archives of NSW and former Maritime Services Board. Preparation of a Maintenance and Conservation Works Schedule to ensure acceptable condition and assist in long-term conservation. The Blues Point Light Structure is recommended to be included in Part 1 of Schedule 5 of the North Sydney Local Environmental Plan 2013, as an item of local heritage significance.			
Management: Statutory Instrument			
Further Comments: Port Authority of NSW Category 2 aid to navigation under the Port Safety Operating Licence (SYD-034). To be made redundant with function being replaced by contemporary water-based aid to navigation.			
Criteria a) Of Historical significance for its association with navigation aids employed in Sydney Harbour during the early 20th century.			
Criteria b)			

Criteria c) The light structure has some level of aesthetic significance for its functional maritime design, as well as an example of the growing utilisation of steel lattice or truss structures in public infrastructure works at around the end of the nineteenth and beginning of the twentieth centuries.					
Criteria d)					
Criteria e)					
Criteria f)					
Criteria g)					
Integrity / Intactness:					
References:	Author:		Title:		Year:
			Admiralty Sailing Directions - Australia Pilot Vol 11 Seventh Edition		1999
	Sydney Harbour Trust		The Sydney Harbour Trust Commissioners Report Year ended 1904		1904
Studies:	Author:		Title:	Number:	Year:
	Consultants		Conservation Register		2004
Parcels:	Parcel Code:	Lot Number:	Section:	Plan Code:	Plan Number:
Latitude: -33.850565			Longitude: 151.203861		
Listings:	Name:		Title:	Number:	Date:
	Heritage Act – S.170 NSW State agency heritage register		Blues Point Light Structure	4560034	7/12/2004
	State Environmental Planning Policy (Precincts-Eastern Harbour City) 2021		Sydney Opera House Buffer Zone		
	North Sydney Local Environmental Plan 2013		Blues Point Waterfront Group	10423	
North Sydney Local Environmental Plan 2013		McMahons Point South Heritage Conservation Area	CA14		

Data Entry:	Date First Entered: 13/07/2004	Date Updated: 26/10/2022	Status: Basic
-------------	-----------------------------------	-----------------------------	------------------

Image: 1



Caption: Blues Point Light Structure

Copyright: Port Authority of New South Wales

Image By: Susan McIntyre – Tamwoy Heritage Consultants

Image Date:

Image File: 4560034b1.jpg

Image: 2



Caption: Blues Point Light Structure

Copyright: Port Authority of New South Wales

Image By: Zach Nix - NBRIS

Image Date: 12/10/2022

Image File: 4560034b2.jpg

Image: 3



Caption: Blues Point Light Structure

Copyright: Port Authority of New South Wales

Image By: Zach Nix - NBRIS

Image Date: 26/10/2022

Image File: IMG_0766

Image: 4



Caption: Etching of Blues Point and view west towards Parramatta River

Copyright: Out of copyright; mandatory credit 'Image courtesy Stanton Library Historical Services', LH REF PF393

Image By: unknown

Image Date: c1840s

Image File: 4560034b3.jpg

Image: 5



Caption: Blues Point, North Shore

Copyright: Out of copyright, image courtesy State Library of New South Wales, SPF/799

Image By: Robert Hunt

Image Date: 1858-59

Image File: 4560034b4.jpg

Image: 6



Caption: Sydney from Blues Point showing a structure on the point

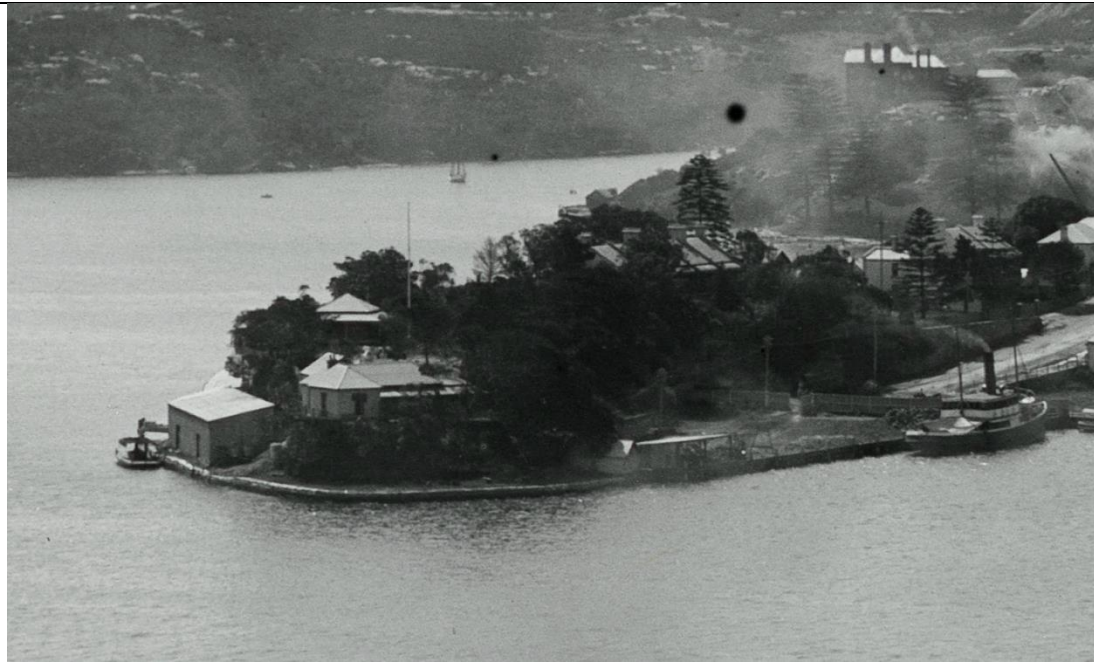
Copyright: Out of copyright, image courtesy State Library of New South Wales, SPF/801

Image By: Charles Troedel and Co

Image Date: c1878

Image File: 4560034b5.jpg

Image: 7



Caption: Detail from image of Sydney Harbour, west of Sydney Cove from Observatory Hill to Blues Point

Copyright: Out of copyright, image courtesy State Archives and Records of New South Wales, NRS-4481-2-[4/8622]-778

Image By: unknown

Image Date: 1890s

Image File: 4560034b6.jpg

Image: 8



Caption: Detail from Aerial view of Blues Point showing a light structure at the point

Copyright: Out of copyright, image courtesy State Archives and Records of New South Wales, NRS-9856-2-65-5156

Image By: unknown

Image Date: undated, c1920s

Image File: 4560034b7.jpg

Image: 9



Caption: View of Blues Point Tower showing a light structure at the point

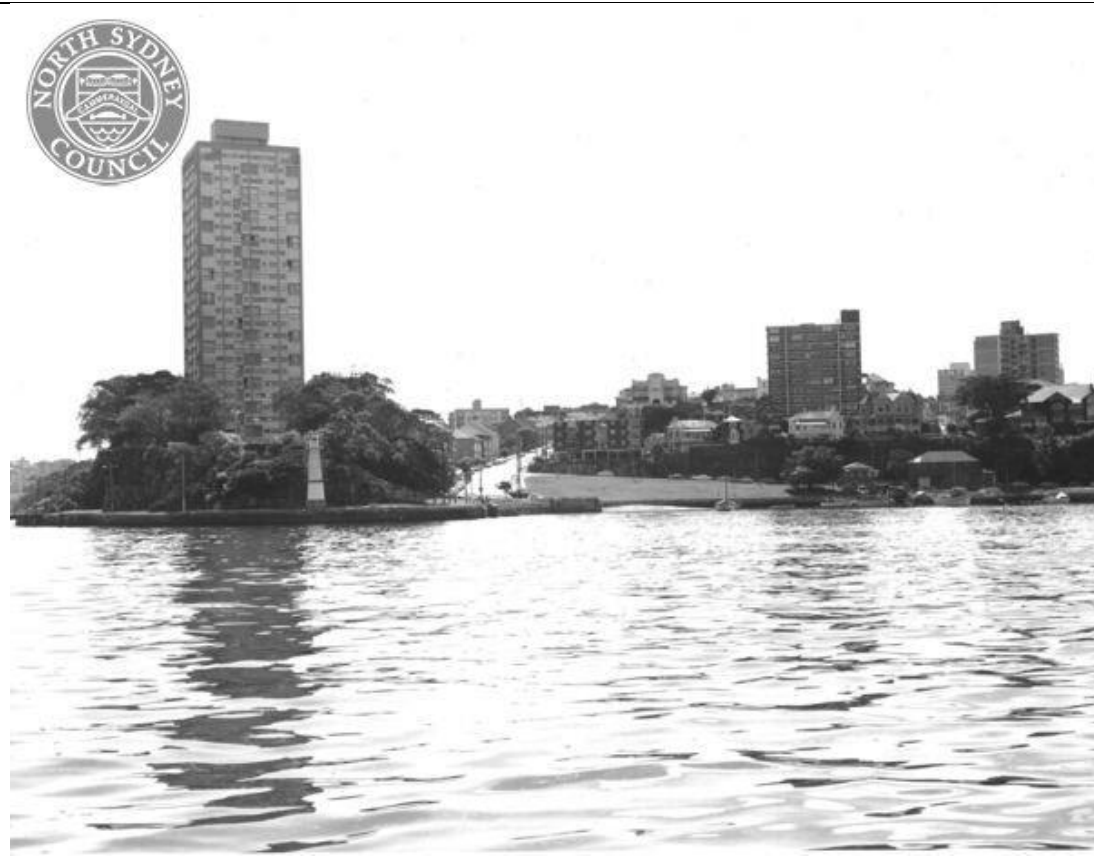
Copyright: NSW Department of Planning, Image courtesy Stanton Library Historical Services, LH REF PF1904

Image By: unknown

Image Date: 1974

Image File: 4560034b8.jpg

Image: 10



Caption: View of Blues Point Tower showing a light structure at the point

Copyright: NSW Department of Planning, Image courtesy Stanton Library Historical Services, LH REF PF1905

Image By: unknown

Image Date: 1974

Image File: 4560034b9.jpg

Image: 11



Caption: Blues Point

Copyright: Licensed for use under a Creative Commons Attribution: Graeme Andrews Working Harbour Photograph Collection, City of Sydney Archives, A-00077494

Image By: Graeme Andrews

Image Date: 1976

Image File: 4560034b10.jpg

Image: 12



Caption: 'Old light tower at Blues Point'

Copyright: Peter Rose, Image courtesy Stanton Library Historical Services, LH REF PF1172

Image By: Peter Rose

Image Date: 1970s

Image File: 4560034b11.jpg

Image: 13



Caption: View to Blues Point and Blues Point Tower from ferry M.V. Proclaim on Sydney Harbour

Copyright: Image courtesy Stanton Library Historical Services, LH REF CT 18/6

Image By: Mary Vinter

Image Date: August 1987

Image File: 4560034b12.jpg

Image: 14



Caption: View of Pyrmont Smoke from Blues Point Tower showing a light structure at Millers Point, possibly the subject item

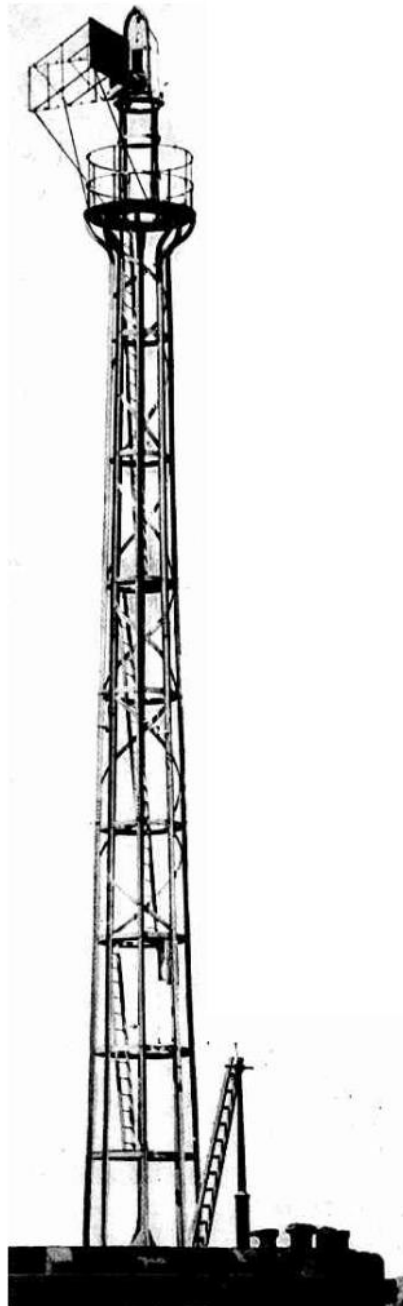
Copyright: Image courtesy State Archives and Records of New South Wales, NRS-20347-1-14-3837

Image By: Mary Vinter

Image Date: 1962

Image File: 4560034b13.jpg

Image: 15



Caption: Existing light structure in its original location at Millers Point, 1910.

Copyright: Copyright expired, citation: 'Harbor Lights -- Navigation of the Port of Sydney', *Australian Town and Country Journal*, 2 February 1910, 28, <http://nla.gov.au/nla.news-article264080899>

Image By: National Library of Australia via Trove

Image Date: 1910

Image File: 4560034b14.jpg

Image: 16



Caption: SS *Ceramic* departing the White Star Line wharf at Millers Point, with the light structure evident in the background

Copyright: Image courtesy Australian National Maritime Museum (ANMM Collection), 00035758

Image By: Samuel J Hood Studio

Image Date: 1920 - 39

Image File: 4560034b15.jpg