

PORT AUTHORITY OF NSW HERITAGE INVENTORY

State Heritage Inventory

SHI Number: 4560029		Study Number: N/A	
Item Name: Dawes Point Fog Signal and Navigation Light			
Location: Hickson Road, Dawes Point			
Address: Hickson Road, Dawes Point		DUAP Region: Sydney South	
Suburb / Nearest Town: The Rocks, 2000		Historic Region: Sydney	
Local Govt Area: Sydney		Parish: St Philip	
State: NSW		County: Cumberland	
Other/Former Names: Dawes Point Light; Dawes Point Lighthouse and Fog Siren			
Area/Group/Complex: Category 2 Aid to Navigation Port Safety Operating Licence (SYD-032)			Group ID: 2
Aboriginal Area: Tar-Ra / Dawes Point (dual name), Gadigal			
Curtilage/Boundary: Bounded by the edge of Circular Quay and Hickson Road			
Item Type: Built	Group: Maritime Industry	Category: Lighthouse Tower	
Owner: Port Authority of New South Wales			
Current Use: Aid to navigation under the Port Safety Operating Licence			
Former Uses:			
Assessed Significance: Local		Endorsed Significance:	
Statement of Significance: The Dawes Point Fog Signal and Navigation Light is of significance as part of an integral component of the navigational system which ensures the safe operation of Sydney Harbour. While not part of the core grouping of lighthouses constructed at the turn of the century, the structure is a unique example of approaches to aid to navigation design in the post-war period reflective of the architecture of its time (1948)			
Historical Notes or Provenance: <p>In March 1904 Sydney Harbour Trust Commissioners decided to place a bell, powered by electric motors, at Dawes Point, which had long been identified a hazardous zone for vessels plying the harbour, in particular ferries. A steam punt service operated between Dawes Point (neighbouring the present Dawes Point Fog Signal and Navigational Light) and Blues Point from the 1860s until about 1932 (image 5 and 6).</p> <p>By April 1905 'three large bells' weighing over 150 kilograms each were 'being made' and were intended as fog signals for Bradleys Head, Fort Denison and Dawes Point. The bell was installed at Dawes Point and commenced operations on 6 May 1905 with a signal of three strokes of the bell with an interval of eight seconds between each stroke, followed by an interval of 14 seconds. In September 1906, the signal made was changed to a continuous bell sound.</p> <p>In 1904 a red, fixed pile beacon, 14 feet in height, and powered by electricity was placed in the reef on the western side of the entrance to Sydney Cove (Circular Quay) at the 'end of Horse Ferry Wharf' (image 7-10). In 1906, a red, fixed, electric light was constructed on a 39 ½ foot pole at the end of Dawes Point.</p>			

In 1946-48 a concrete navigational light with a copper dome, incorporating a foghorn or siren which replaced the bell, was erected at Dawes Point (item 4560029).			
Themes:	National Theme: 3. Economy	State Theme: Transport	Local Theme: None
Designer: unknown			
Maker / Builder: Sydney Harbour Trust			
Year Started: 1946	Year Completed: 1948	Circa: Yes	
<p>Physical Description: Concrete structure with copper dome. Located SE of and close to the South end of Sydney Harbour Bridge. Dawes Point Light shows a red fixed light operated by mains power. The fog siren is also mains operated. The concrete structure has a rendered façade finish below a decorative stringcourse. The render contains decorative vertical banding at the corners and reflects both elements of functional and decorative design elements.</p> <p>Fronting Hickson Road, the structure has a two-panel timber entry door with a characteristic chevron motif. Above the door, the date of construction of the structure is identified in render as '1948'. The structure also contains two fixed top-light windows on its northern and western elevations, as well as a single vertically oriented, timber framed, three panel window, on its western elevation.</p>			
Physical Condition: The structure appears in generally good condition, however, there appears to be evidence of concrete spalling to the upper concrete section of the structure, and minor cracking in the rendered section below. The structure also appears to have a slight lean towards the north, the item would benefit from an overall condition assessment, subsequent repair and maintenance works.			
Modification Dates:			
<p>Recommended Management:</p> <p>Retain in situ and conserve</p> <p>Preparation of a Heritage Assessment of Port Authority of NSW Sydney Harbour Aids to Navigation in order to confirm relevance of group listing and applicability of individual items.</p> <p>Preparation of a Maintenance and Conservation Works Schedule to ensure acceptable condition and assist in long-term conservation.</p> <p>The Dawes Point Fog Signal and Navigation Light is recommended to be included in Part 1 of Schedule 5 of the Sydney Local Environmental Plan 2012, as an item of local heritage significance.</p>			
<p>Management:</p> <p>Statutory Instrument</p>			
Further Comments: Port Authority of New South Wales Category 2 aid to navigation			
Criteria a) The Dawes Point Fog Signal and Navigational Light has been an integral part of the safe operation of the Port of Sydney since 1905. While replacing an earlier light structure, the light maintains a significant role in the navigational operation of Sydney Harbour. The design of the structure based largely around its function as a navigational light and fog siren is particular to its purpose and is evidence of the different approaches to navigational light structure design around the Harbour through history.			
Criteria b)			
Criteria c) The Dawes Point Light and Fog Siren is of aesthetic significance at a local level demonstrating an example of a post-war functionalist approach to aid to navigation design. The aesthetic of the structure harmonises somewhat visually with the character of the surrounding Dawes Point foreshore.			

Criteria d)						
Criteria e)						
Criteria f)						
Criteria g)						
Integrity / Intactness: Good						
References:	Author:		Title:		Year:	
			Sydney Harbour Trust Annual Report		1904	
			Admiralty Sailing Directions		1999	
	Woollahra Libraries		Woollahra Heritage Briefs #49 Navigating Past Woollahra			
	Government Printer		'Establishment of Fog Signals in Port Jackson', Government Gazette of the State of New South Wales		13 June 1905, page 3937	
	Sydney Harbour Trust		The Port of Sydney, NSW: Official Handbook		1913, page 68	
Studies:	Author:		Title:		Number:	Year:
	Susan McIntyre-Tamwoy Heritage Consultants		Sydney Ports Corporation Heritage and Conservation Register		4560029	2004
Parcels:	Parcel Code:	Lot Number:	Section:	Plan Code:	Plan Number:	
Latitude: -33.854914			Longitude: 151.210251			
Listings:	Name: Heritage Act – S.170 NSW State agency heritage register		Title: Dawes Point Fog Signal and Navigation Light (SYD-032)		Number: 4560029	Date: 1/07/2004
	State Environmental Planning Policy (Precincts-Eastern Harbour City) 2021		Sydney Opera House Buffer Zone			
Data Entry:	Date First Entered: 07/07/2004		Date Updated: 20/12/2022		Status: Basic	

Image: 1



Caption: Dawes Point Lighthouse, Light & Fog Siren

Copyright: Port Authority of New South Wales

Image By: Susan McIntyre – Tamwoy Heritage Consultants

Image Date:

Image File: 4560029b1.jpg

Image: 2



Caption: Dawes Point Fog Signal and Navigation Light

Copyright: Port Authority of New South Wales

Image By: Nicole Cama - NBRIS

Image Date: 21/09/2022

Image File: 4560029b2.jpg

Image: 3



Caption: Dawes Point Fog Signal and Navigation Light with former vehicular ferry ramp directly behind

Copyright: Port Authority of New South Wales

Image By: Nicole Cama - NBRIS

Image Date: 21/09/2022

Image File: 4560029b3.jpg

Image: 4



Caption: Dawes Point Fog Signal and Navigation Light

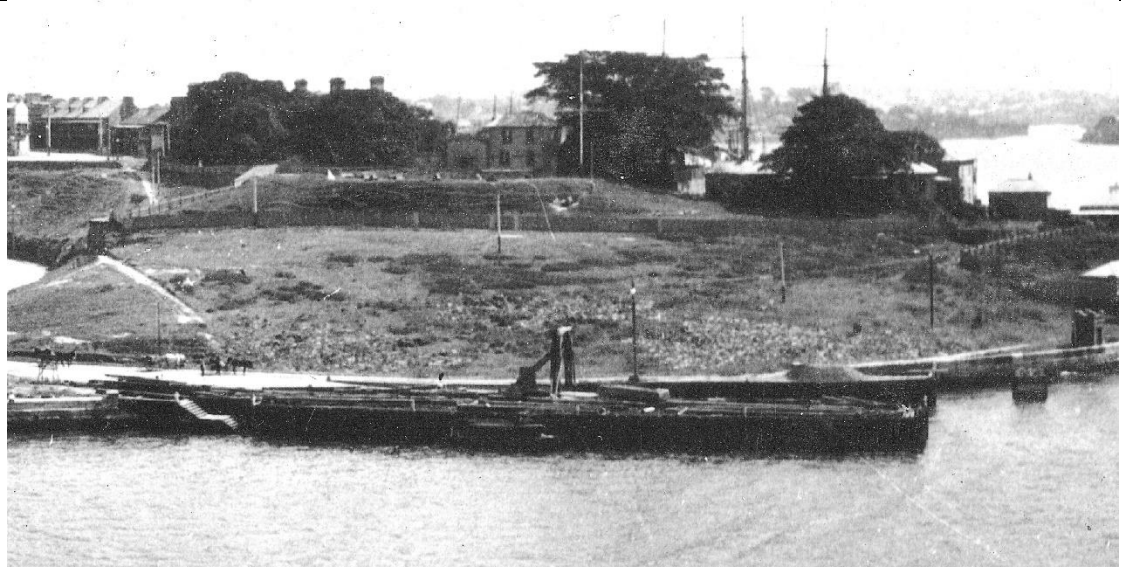
Copyright: Port Authority of New South Wales

Image By: Nicole Cama - NBRIS

Image Date: 21/09/2022

Image File: 4560029b4.jpg

Image: 5



Caption: Dawes Point vehicular ferry ramp

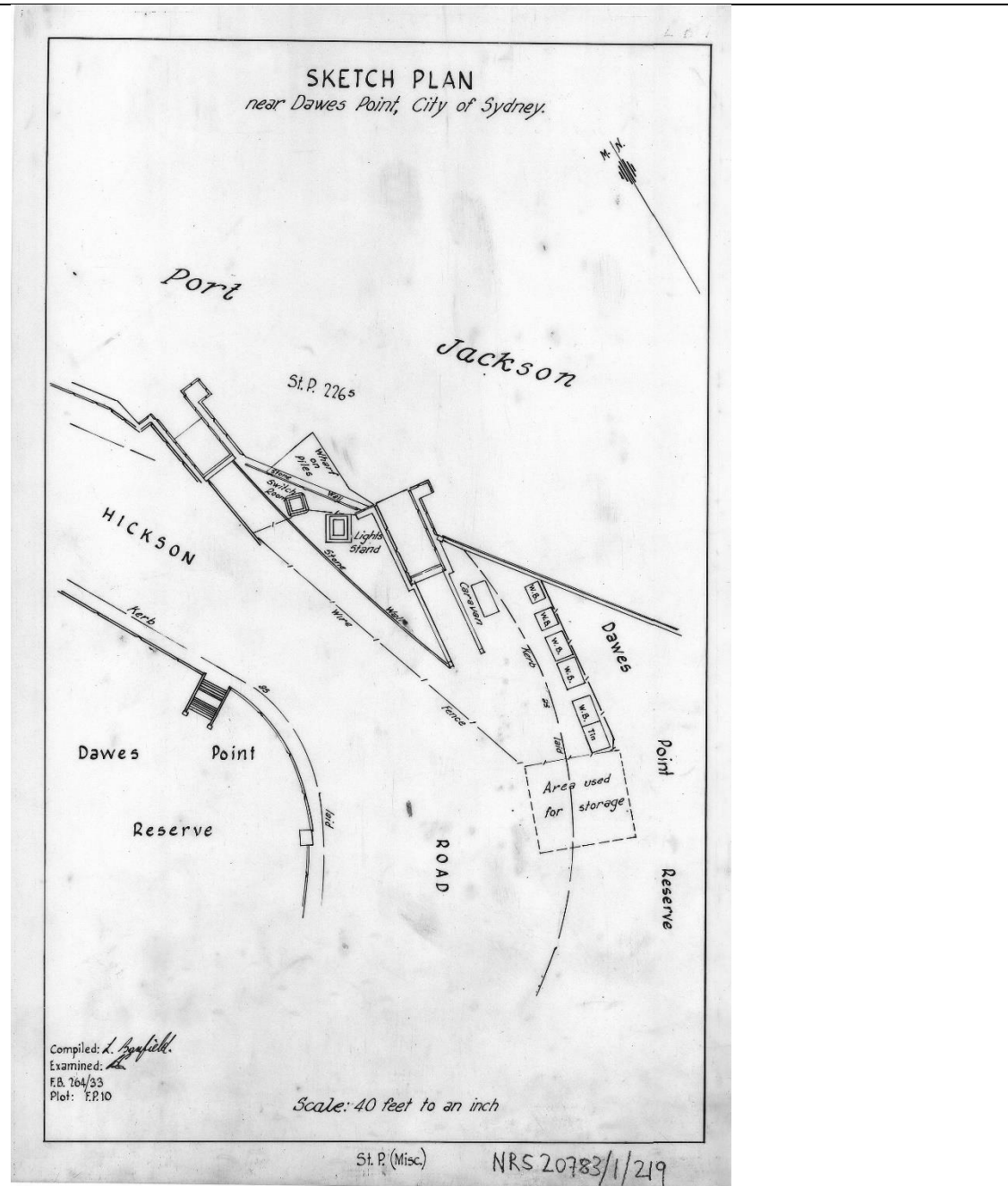
Copyright: Licensed for use under a Creative Commons Attribution (CC BY) license, Graeme Andrews Working Harbour Photograph Collection, City of Sydney Archives, A-00076347

Image By:

Image Date: c1900

Image File: 4560029b5.jpg

Image: 6



Caption: Dawes Point showing the vehicular ferry ramps and other structures including a switch room, lights stand and caravan

Copyright: Out of copyright, State Archives and Records NSW, NRS-20783-1-219-PH Misc/3

Image By:

Image Date: 1900

Image File: 4560029b6.jpg

Image: 7



Caption: View of Dawes Point in the foreground with the vehicular ferry ramp and pile beacon (right)

Copyright: Out of copyright, State Archives and Records NSW, NRS-4481-2-[4/8608]-517

Image By:

Image Date: c1905

Image File: 4560029b7.jpg

Image: 8



Caption: Circular Quay, Sydney showing the vehicular ferry ramp at Dawes Point (lower right) and red pile beacon (centre, off Dawes Point Reserve)

Copyright: Out of copyright, National Library of Australia, PIC P838/366 LOC Album 1124/6

Image By: Edward William Searle

Image Date: c1920

Image File: 4560029b8.jpg

Image: 9



Caption: View of Dawes Point showing the Sydney Harbour Bridge nearing completion, vehicular ferry ramps and other structures including the pile beacon (right, constructed 1904)

Copyright: Out of copyright, State Archives and Records NSW, NRS-4481-3-[7/16025]-St15307

Image By:

Image Date: 1931

Image File: 4560029b9.jpg

Image: 10



Caption: Sydney Opera House at night from Dawes Point with red pile beacon

Copyright: In copyright, Max Dupain, courtesy of Mitchell Library, State Library of NSW, ON 562/nos. 1229-1233

Image By: Max Dupain

Image Date: 1972

Image File: 4560029b10.jpg

Image: 11



Caption: View of Dawes Point Fog Signal and Navigational Light from Dawes Point Battery site

Copyright: Licensed for use under a Creative Commons Attribution (CC BY) license, City of Sydney Archives, A-00058212

Image By: Graeme Andrews

Image Date: 29 May 1986

Image File: 4560029b11.jpg

Image: 12



Caption: View of View of Dawes Point Fog Signal and Navigational Light from the Sydney Harbour Bridge

Copyright: Licensed for use under a Creative Commons Attribution (CC BY) license, Graeme Andrews Working Harbour Photograph Collection, City of Sydney Archives, A-00077540

Image By: Graeme Andrews

Image Date: 1992

Image File: 4560029b12.jpg