

# PORT AUTHORITY OF NSW HERITAGE INVENTORY

## State Heritage Inventory

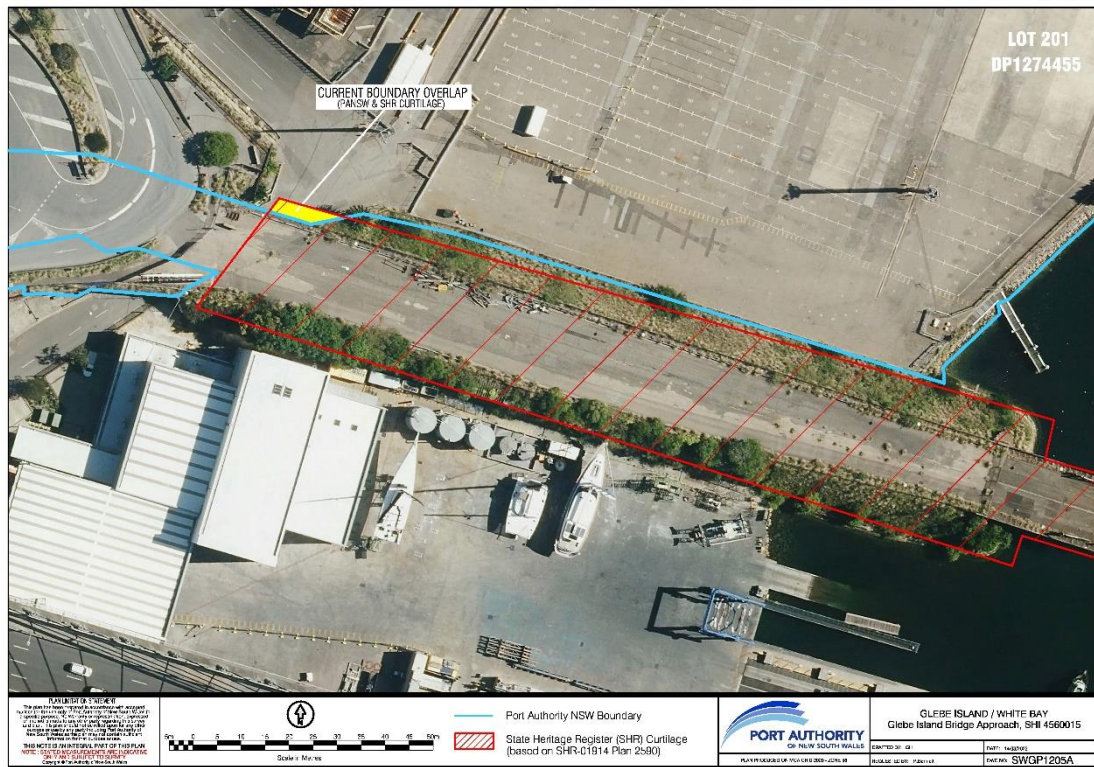
SHI Number: 4560015	Study Number: N/A	
Item Name: Glebe Island Bridge Approach		
Location: Glebe Island (Rozelle)		
Address:		DUAP Region: Sydney South
Suburb / Nearest Town: Rozelle 2039		Historic Region: Sydney
Local Govt Area: Inner West	Parish: Petersham	
State: NSW	County: Cumberland	
Other/Former Names:		
Area/Group/Complex:	Group ID:	
Aboriginal Area: Wangal clan		
Curtilage/Boundary:		
Item Type: Built	Group: Transport – Land	Category: Road Bridge
Owner: Port Authority of New South Wales		
Current Use:		
Former Uses: Road bridge		
Assessed Significance: State	Endorsed Significance: State	
Statement of Significance:		
<p>The Glebe Island Bridge approaches while of limited significance themselves are associated with and directly affect the viability of the Glebe Island (Historic) Bridge which is an item of State significance.</p>		
Historical Notes or Provenance:		
<p>The rocky outcrop known as Glebe Island was originally accessible from the Balmain shoreline only at low tide until a causeway was laid in the 1840s (Peter Reynolds, 'Glebe Island', Dictionary of Sydney). The quarrying of sandstone, boatbuilding and iron foundries were among the earliest industries in the area.</p> <p>From the 1840s until the end of the nineteenth century, quarrymen hewed down the isolated western half of the nearby Pyrmont peninsula for sandstone. Uncounted tons of Pyrmont 'yellowblock', as it was known, were carted into the city to build the great public buildings which remain the signature of Sydney's nineteenth-century built form. The quarries were known locally as 'Paradise', 'Purgatory' and 'Hellhole', in recognition of the difficulty of working the stone (Shirley Fitzgerald, 'Pyrmont', Dictionary of Sydney).</p> <p>In 1850-54 the colonial architect, Edmund Blacket, designed sandstone buildings for a public abattoir on the island. It consisted of two parallel ranges of sandstone buildings, each 220 feet in length with one consisting of 12 slaughterhouses for beef and the other 12 slaughterhouses for sheep. Double steam punts operated between the island and the western shore of Pyrmont. The Glebe Island Abattoir opened in October 1860.</p> <p>The following historical information about Glebe Island Bridge is reproduced from Mark Dunn, 'Glebe Island Bridge', Dictionary of Sydney, 2008, <a href="http://dictionaryofsydney.org/entry/glebe_island_bridge">http://dictionaryofsydney.org/entry/glebe_island_bridge</a>:</p> <p>In 1861 the first timber bridge across the channel was opened. Known as Blackbutt Bridge, because it was constructed out of Tasmanian blackbutt logs, the bridge included a hand-cranked manual lift-span,</p>		

<p>opening to allow shipping to pass through to the bays. The Blackbutt Bridge remained in service until replaced by the second Glebe Island Bridge in 1903.</p> <p>The origin of the second bridge came from the proposal in the 1880s for the Five Bridge Route, to facilitate traffic flow from the city to the developing northern and western suburbs. Bridges were to be replaced at, or built across, Pyrmont Bay, Glebe Island, Iron Cove, Gladesville and Fig Tree. The five bridges were constructed between 1881 and 1901.</p> <p>The new Glebe Island Bridge was designed by Percy Allan. Allan was a leading engineer for the Department of Public Works and had been appointed as engineer-in-charge of bridge design in 1896. Allan's design for the new Glebe Island Bridge (he also designed the new Pyrmont Bridge) utilised the new technology for electrically operated swing spans, with Glebe and Pyrmont claimed to be amongst the largest of their type then constructed and among the first in the world to be electrically operated. [1] Power for the bridge came from the nearby Ultimo Powerhouse, with the swing span operated from a control room located in the centre of the bridge. The swing span allowed for the inward and outward passage of two ships simultaneously.</p> <p>In 1933 the bridge underwent a major upgrade with underpinning to replace decayed piles. The bridge remained in operation until 1995, with little work other than regular maintenance being carried out.</p> <p>In December 1995 a new Glebe Island Bridge was opened, as part of freeway developments for westbound traffic. The new bridge is a major departure from the low level decks of the earlier crossings. It was renamed Anzac Bridge on Remembrance Day 1998.</p>			
Themes:	National Theme:	State Theme:	Local Theme:
Designer:			
Maker / Builder: NSW Department of Public Works			
Year Started: 1903	Year Completed: 1903	Circa: No	
<p>Physical Description:</p> <p>The westward approach to the Glebe Island Bridge was re-routed with the introduction of the Anzac Bridge. A small part of the old approach is now in Port Authority of New South Wales ownership, but no longer forms part of the bridge approach and is at ground level associated with the lead up to the existing underpass, rather than at the grade of the bridge approach. The bridge itself is still owned by Transport for New South Wales.</p> <p>Neither the extant bridge approach (at grade) nor the underpass is land owned by Port Authority of New South Wales. The curtilage of SHR 01914 (Glebe Island Bridge) includes a small area of land that is owned by Port Authority of New South Wales at its north western edge (refer Image 1).</p>			
<p>Physical Condition: The original bridge approaches have been largely destroyed and /or redeveloped up to the commencement of the vehicle underpass and the bridge structure. It is important to consider future cumulative redevelopment and its potential to impact on the viable uses and retention of the Historic Glebe Island Bridge.</p>			
<p>Modification Dates:</p> <p>1933 – bridge was upgraded with underpinning to replace the decayed wooden piles</p>			
<p>Recommended Management: Retain in situ and conserve</p> <p>Maintain in conjunction with future works and wider maintenance works to the Glebe Island Bridge associated with Transport for NSW</p>			
<p>Management: Statutory Instrument</p>			

Further Comments: This S170 Register entry is required due to the partial ownership of a small section of the Glebe Island Bridge approach required to be maintained and managed by Port Authority of NSW in accordance with the provisions of the <i>Heritage Act 1977</i> . The majority of the original Glebe Island Bridge structure and significant elements of note are the responsibility of Transport for NSW corresponding to their ownership of the bridge proper. However, due to the Glebe Island Bridge approaches functional importance to the future use and viability of the bridge, the approach supports the bridge's significance and future conservation and subsequently must be managed accordingly.				
Criteria a)				
Criteria b)				
Criteria c)				
Criteria d)				
Criteria e)				
Criteria f)				
Criteria g)				
Integrity / Intactness:				
References:	Author:	Title:		Year:
	<i>Sydney Morning Herald</i>	'Removal of the Slaughter-houses from Sydney'		2 October 1860, page 5
	Susan McIntyre-Tamwoy	Glebe Island Interpretation Project Collation of information for Sydney Ports		2004
	Peter Reynolds	Glebe Island, Dictionary of Sydney, <a href="http://dictionaryofsydney.org/entry/glebe_island">http://dictionaryofsydney.org/entry/glebe_island</a>		2008
	Shirley Fitzgerald	Pymont, Dictionary of Sydney, <a href="https://dictionaryofsydney.org/entry/pymont">https://dictionaryofsydney.org/entry/pymont</a>		2008
	Mark Dunn	'Glebe Island bridge', Dictionary of Sydney, <a href="https://dictionaryofsydney.org/entry/glebe_island_bridge">https://dictionaryofsydney.org/entry/glebe_island_bridge</a>		2008
	Pymont History Group	Glebe Island, <a href="https://pymonthistory.net.au/glebe-island">https://pymonthistory.net.au/glebe-island</a>		2011
Studies:	Author: NSW Public Works	Title: Glebe Island Bridge Conservation Management Plan	Number:	Year: 2022
Parcels:	Parcel Code:	Lot Number:	Section:	Plan Code: Plan Number:
Latitude: -33.867510		Longitude: 151.183754		
Listings:	Name:	Title:	Number:	Date:
	Heritage Act – S.170 NSW State agency heritage register	Glebe Island Bridge Approach	4560014	1/07/2004
	Heritage Act 1977 (NSW): State Heritage Register	Glebe Island Bridge	01914	29/11/2013

	State Environmental Planning Policy (Biodiversity and Conservation) 2021	Glebe Island Bridge, including abutments	125	
Data Entry:	Date First Entered: 29/06/2004	Date Updated: 24/01/2023	Status: Basic	

Image: 1



Caption: Glebe Island bridge approach plan

Copyright: Port Authority of New South Wales

Image By: Port Authority of New South Wales

Image Date: 14/03/2023

Image File: SWGP1205A\_Final

Image: 2



Caption: Glebe Island bridge approach from Monument Lookout

Copyright: Port Authority of New South Wales

Image By: Zach Nix - NBRS

Image Date: 05/10/2022

Image File: 4560014b1.jpg

Image: 3



Caption: Glebe Island Bridge approach closeup from Monument Lookout

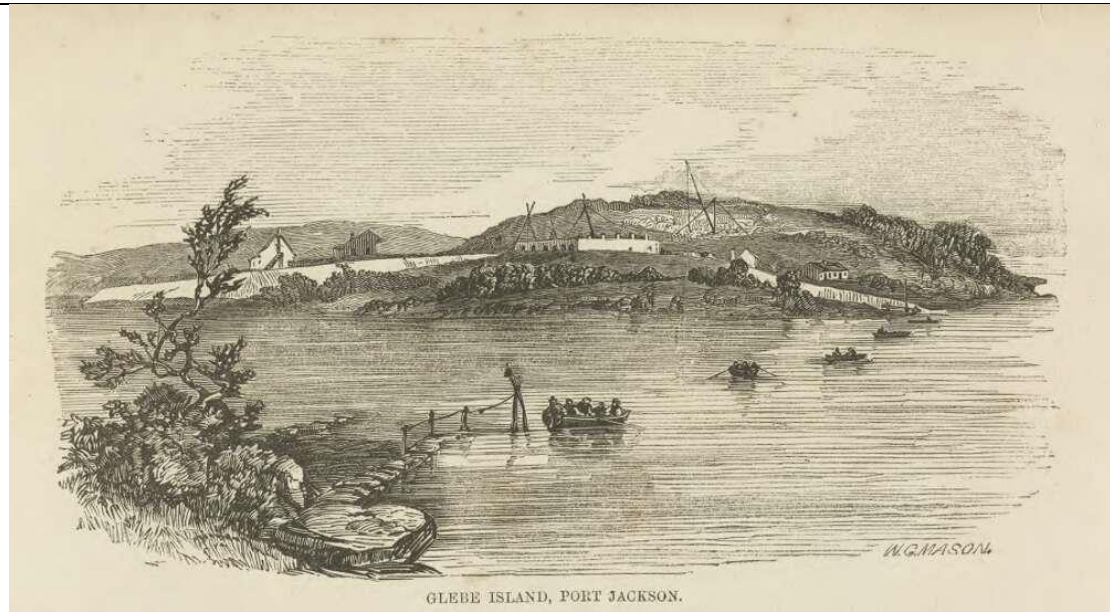
Copyright: Port Authority of New South Wales

Image By: Zach Nix - NBRS

Image Date: 05/10/2022

Image File: 4560014b2.jpg

Image: 4



Caption: Wood engraving of Glebe Island, Port Jackson

Copyright: Out of copyright, image courtesy of National Library of Australia, PIC Volume 6A #S1231

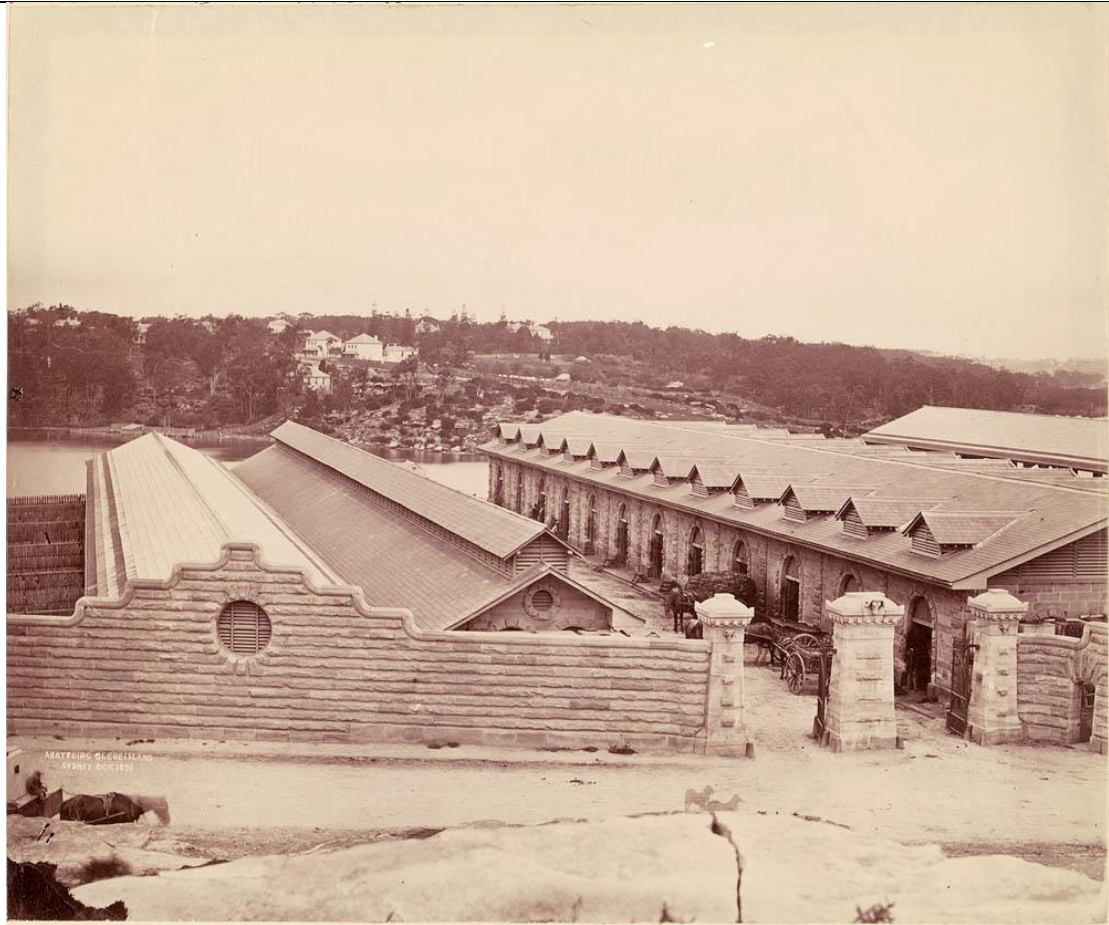
Image By: Walter G Mason

Image Date: 1857

Image File: 4560014b3.jpg



Image: 5



Caption: Abattoirs at Glebe Island, Sydney

Copyright: Out of copyright, image courtesy of State Library of New South Wales, SPF/664

Image By: Charles Percy Pickering

Image Date: October 1870

Image File: 4560014b4.jpg

Image: 6



Caption: Blackbutt Bridge [first Glebe Island Bridge]

Copyright: Out of copyright, image courtesy of State Library of New South Wales, ON 4 Box 58 No 281

Image By: American & Australasian Photographic Company

Image Date: 1870-75

Image File: 4560014b5.jpg

Image: 7



Caption: Glebe Island Bridge

Copyright: Out of copyright, image courtesy of City of Sydney Archives, A-00006182

Image By:

Image Date: 1915

Image File: 4560014b6.jpg

Image: 8



Caption: View of Glebe Island toward Pyrmont and the Sydney CBD

Copyright: Out of copyright, image courtesy of City of Sydney Archives, Len Stone Photograph Collection, A-00057820

Image By:

Image Date: 1950

Image File: 4560014b7.jpg

Image: 9



Caption: Aerial view of Glebe Island, Blackwattle Bay, Pyrmont and Glebe

Copyright: In copyright, image courtesy of City of Sydney Archives, A-00009637

Image By: Southern Aerial Surveys Pty Ltd

Image Date: 18/06/1994

Image File: 4560014b8.jpg