

PORT AUTHORITY OF NSW HERITAGE INVENTORY

State Heritage Inventory

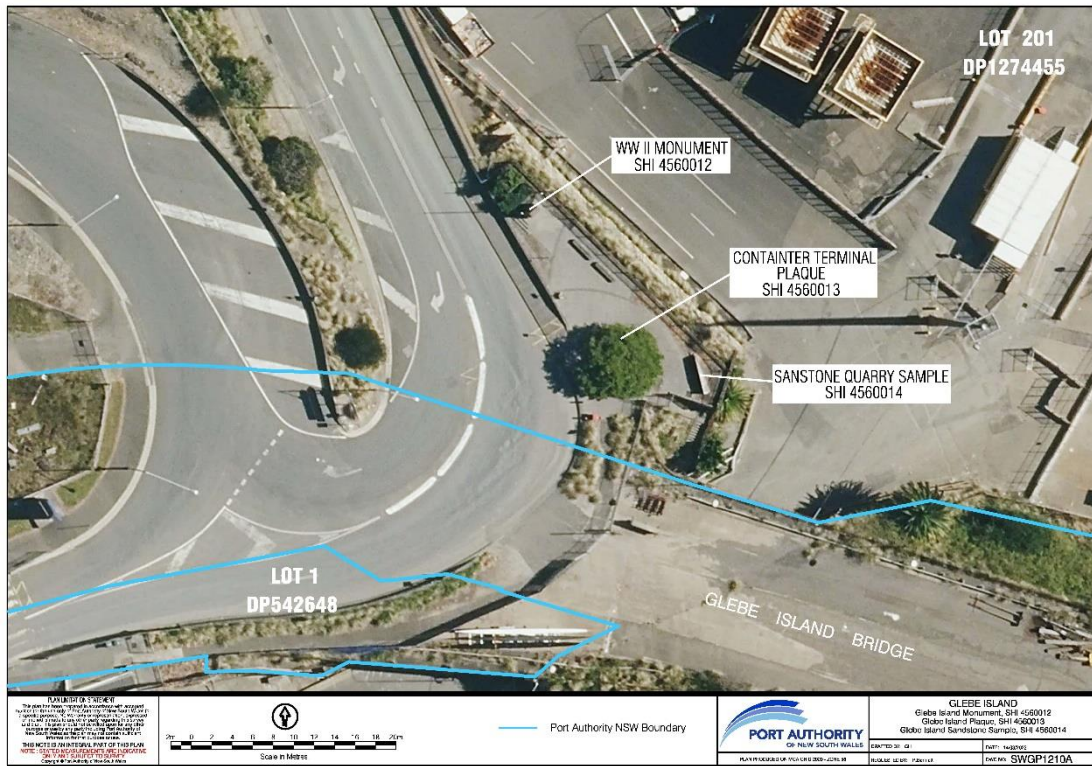
SHI Number: 4560012		Study Number: N/A	
Item Name: Glebe Island World War II Monument			
Location: Glebe Island (Rozelle)			
Address: Monument Lookout, Sommerville Road, Rozelle		DUAP Region: Sydney South	
Suburb / Nearest Town: Rozelle 2039		Historic Region: Sydney	
Local Govt Area: Inner West		Parish: Petersham	
State: NSW		County: Cumberland	
Other/Former Names:			
Area/Group/Complex:		Group ID:	
Aboriginal Area: Wangal			
Curtilage/Boundary:			
Item Type: Built	Group: Monuments and Memorials		Category: War Memorial
Owner: Port Authority of New South Wales			
Current Use: Monument / Interpretation			
Former Uses:			
Assessed Significance: Local		Endorsed Significance:	
Statement of Significance: <p>The monument commemorating the first landing of the United States armed forces at Glebe Island and the subsequent role of the Port authorities in moving personnel and supplies as part of the War effort is of local significance. It is a physical reminder of a brief but important period in the history of Glebe Island. It provides a reminder of the role that the Port of Sydney and the NSW rail network played in the disembarkation and distribution of personnel and equipment during World War II (Susan McIntyre-Tamwoy 2003:6).</p>			
Historical Notes or Provenance: <p>The monument commemorates the first landing of United States Armed Forces at the Port of Sydney on 28 March 1942 and the subsequent movement of one million personnel and 500,000 tons of materials through the Port of Sydney by the NSW Department of Railways and Maritime Services Board (MSB) during the war.</p> <p>The monument was erected in 1946 and became the focus of annual wreath laying ceremonies for almost 40 years. Initially ceremonies were held around the 4 July (American Independence Day).</p> <p>The memorial, which was described as an obelisk in newspapers at the time, was officially unveiled on 26 November 1946 by the Premier of New South Wales William John McKell. The memorial was maintained by the MSB. The president of the MSB, G H Faulks, also announced at the unveiling that the organisation would 'beautify the site with lawns and trees'.</p>			

<p>Memorial ceremonies ceased in about 1984. By that time Port development had left the Monument on a rather desolate concrete roadside verge.</p> <p>In 2004 during further remodeling and extension of the Port facilities, the Monument was relocated to a more prominent site (current location) and interpretation was provided to ensure that the important contribution of the troops and the departments involved could be remembered.</p>			
Themes:	National Theme:	State Theme:	Local Theme:
	7. Governing	Defence	(none)
	9. Phases of Life	Events	(none)
Designer:			
Maker / Builder: NSW Department of Railways, Maritime Services Board, NSW Government			
Year Started: 1946	Year Completed: 1946		Circa: No
<p>Physical Description: A concrete block structure with a pebblecrete finish set on low steps with a brass plaque commemorating the first landing of US Armed Forces in March 1942 and a secondary plaque commemorating the unveiling of the Monument in November 1946.</p> <p>Main plaque reads:</p> <p><i>Commemorating the first landing of the U.S. Armed Forces at the Port of Sydney on 28th March 1942.</i></p> <p><i>During the Second World War 1,000,000 personnel and 5,000,000 tons of materials followed and were transported through the Port of Sydney and by The NSW Department of Railways.</i></p> <p><i>Roy L.Schuyler Colonel Infantry U.S. Army Commanding.</i></p> <p><i>George H. Faulks Esq. President Maritime Services Board New South Wales.</i></p> <p><i>T. J. Hartican Esq. C.M. G. Commissioner Department of Railways New South Wales.</i></p>			
<p>Physical Condition: The monument was re-installed with interpretation in a prominent position above the Port at Glebe Island as part of the restructuring of the Port in 2004. The monument is in fair condition with some incidences of cracking and efflorescence being observed in the item's pebblecrete finish. Given the location of the item in a maritime environment, this may be due to corrosion or spalling of the concrete structure. The item was also observed to have some general wear (chipping) potentially from the movement of the monument in 2004.</p>			
<p>Modification Dates:</p> <p>Pebblecrete covering the concrete possibly added in the early 1970s.</p> <p>2004 – Relocated towards the Anzac Bridge a more prominent site (still within Glebe Island) which allows public access.</p>			
<p>Recommended Management: Retain in situ and conserve</p> <p>Preparation of a Maintenance and Conservation Works Schedule to ensure acceptable condition and assist in long-term conservation (potentially covering all Glebe Island Monuments and Interpretive items)</p>			
Management: Statutory Instrument			
Further Comments:			

Criteria a) The monument commemorating the first landing of United States Armed Forces at Glebe Island is of local significance. It is a physical reminder of a brief but important period in the history of Glebe Island. It provides a reminder of the role that the Port of Sydney and the NSW Railway network played in the disembarkation and distribution of personnel and equipment during World War 11(S McIntyre-Tamwoy 2003).						
Criteria b)						
Criteria c)						
Criteria d) Of significance to one million troops who passed through the port and the Port of Sydney and NSW Railways personnel who handled the people and materials. Later to the many people who attended the commemorative services between 1947 and 1984.						
Criteria e)						
Criteria f)						
Criteria g)						
Integrity / Intactness:						
References:	Author:		Title:		Year:	
	Maritime Services Board		Memorial to U.S Armed Forces – Glebe Island, Port of Sydney in Port of Sydney Journal		1950	
	Maritime Services Board		Anniversary of the Coral Sea Battle in Port of Sydney Journal (April and June)		1957	
	Maritime Services Board		'Sydney's Symbol of Friendship Forged in War' in Port of Sydney Journal (September)		1982	
	Maritime Services Board		'Notes on the Meaning of the American Memorial day			
	Monument Australia		First Landing of the United States of America Armed Forces, https://monumentaaustralia.org.au/themes/conflict/ww2/display/21269-first-u.s.-troops-landing-glebe-island-memorial		2010	
Studies:	Author:		Title:		Number:	Year:
	Susan McIntyre-Tamwoy Heritage Consultants		Sydney Ports Corporation World War II Monument Glebe Island: SOHI			2003
	Mayne -Wilson and Associates		Heritage Impact Assessment. App 5 to REF Roadworks Glebe Island Rozelle			2002
Parcels:	Parcel Code:	Lot Number:	Section:	Plan Code:	Plan Number:	
Latitude: -33.867399			Longitude: 151.183466			
Listings:	Name:		Title:	Number:	Date:	
				4560012		

	Heritage Act – S.170 NSW State agency heritage register	Glebe Island World War II Monument		1/07/200 4
	State Environmental Planning Policy (Precincts – Eastern Harbour City) 2021	Monument, Glebe Island	5	2021
Data Entry:	Date First Entered: 29/06/2004	Date Updated: 19/12/2022		Status: Basic

Image: 1



Caption: Glebe Island World War II Monument Location Plan

Copyright: Port Authority of New South Wales

Image By: Port Authority of New South Wales

Image Date: 14/03/2023

Image File: SWGP1210A_Final

Image: 2



Caption: Glebe Island World War II Monument-after relocation

Copyright: Port Authority of New South Wales

Image By: Susan McIntyre-Tamwoy Heritage Consultants

Image Date:

Image File: 4560012b1.jpg

Image: 3



Caption: The monument in original location

Copyright:

Image By: Susan McIntyre-Tamwoy

Image Date:

Image File: 4560012b2.jpg

Image: 4



Caption: Memorial ceremony

Copyright:

Image By: Unknown

Image Date: c1960s

Image File: 4560012b3.jpg

Image: 5



Caption: The monument in its existing location, front profile

Copyright: Port Authority of New South Wales

Image By: Zach Nix - NBRS

Image Date: 05.10.2022

Image File: 4560012b4.jpg

Image: 6



Caption: Close up of plaque on upper section of monument

Copyright: Port Authority of New South Wales

Image By: Zach Nix - NBRS

Image Date: 05.10.2022

Image File: 4560012b4.jpg

Image: 7



Caption: Close up of lower plaque on base of the monument

Copyright: Port Authority of New South Wales

Image By: Zach Nix - NBRS

Image Date: 05.10.2022

Image File: 4560012b5.jpg