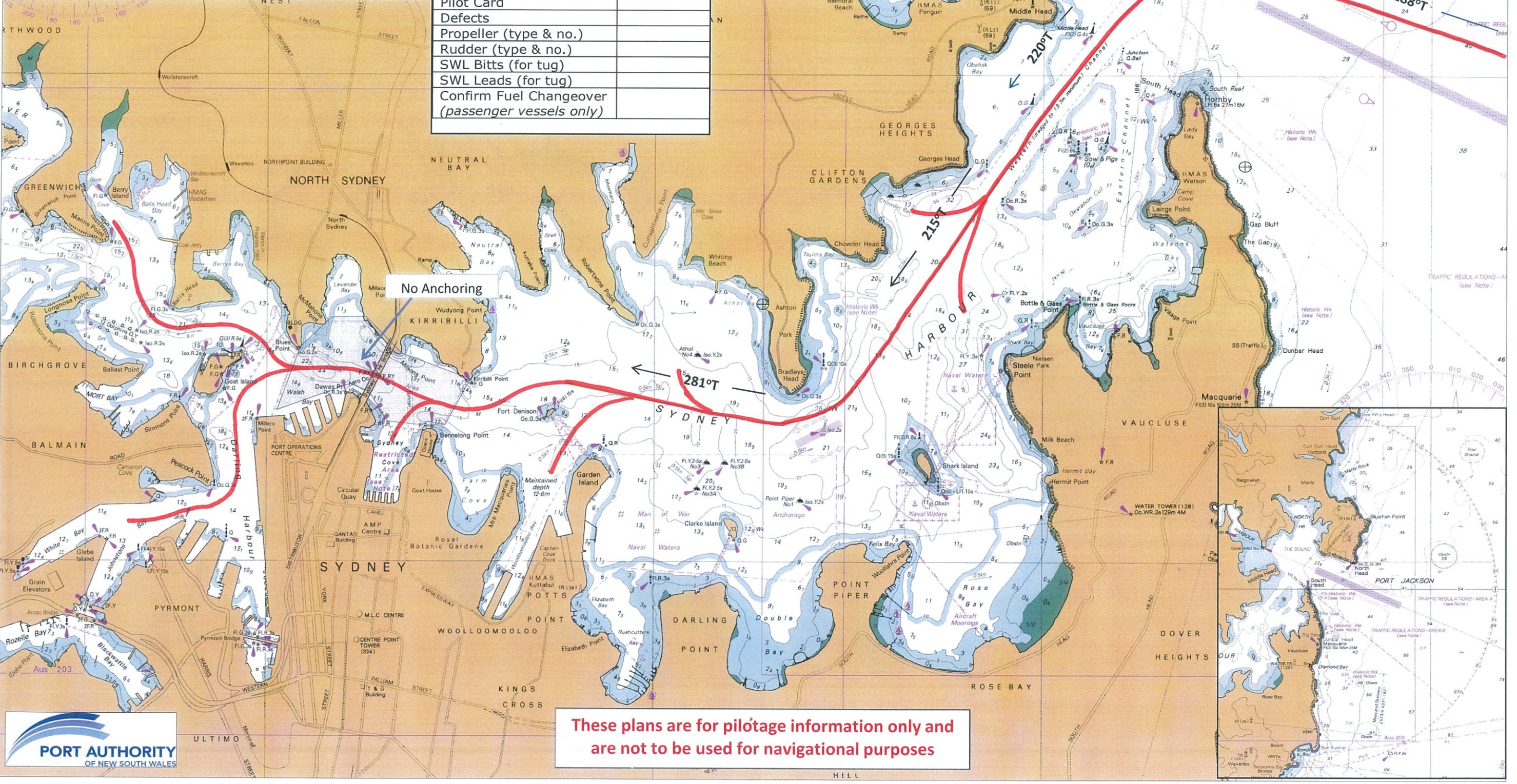
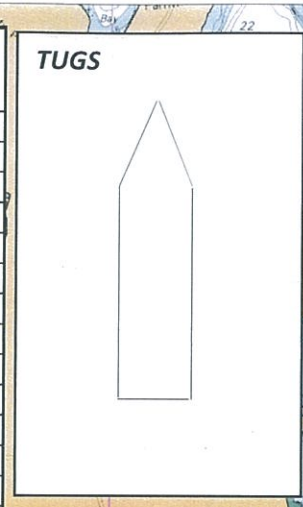


Port Jackson Passage Plan Arrival		
Ship:	Date:	
From:	To:	Pilot:
Tides:	Wind:	
VHF - VTS:	Working Ch:	
Traffic:		
First / Last Line:		
Bridge Marker:	Clearance Ahead:	Astern:

The information on this chart is for pilotage information only, it is not to be used for navigational purposes. The pilotage plan is subject to change due to operational requirements

The Bridge Team is to monitor the pilotage at all times as per IMO requirements.

Under Keel Clearance TO BE COMPLETED WHEN DRAFT >10M	
Draft	
+10%	
Depth Required	
Minimum Depth	
Tide	
Actual Min. Depth	
UKC	
Checklist	
ME Tested	
Thruster Working (%)	
Anchors Clear	
Crew Standby Forward	
Steering Motors	
Pilot Card	
Defects	
Propeller (type & no.)	
Rudder (type & no.)	
SWL Bitts (for tug)	
SWL Leads (for tug)	
Confirm Fuel Changeover (passenger vessels only)	



These plans are for pilotage information only and are not to be used for navigational purposes

